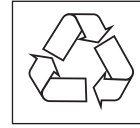
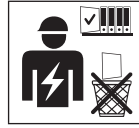
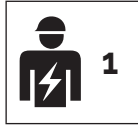


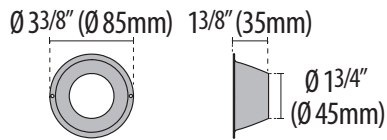
# 3107463/LTS1A3571/3107466/3107469



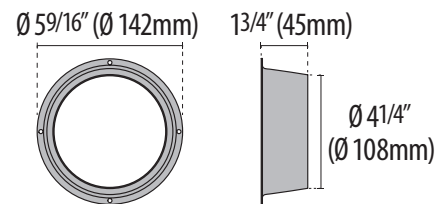
3107463	Max 0 lb 1 oz	Max 0.03 Kg
LTS1A3571	Max 0 lb 1.8 oz	Max 0.05 Kg
3107466	Max 0 lb 5.3 oz	Max 0.15 Kg
3107469	Max 0 lb 9.5 oz	Max 0.27 Kg



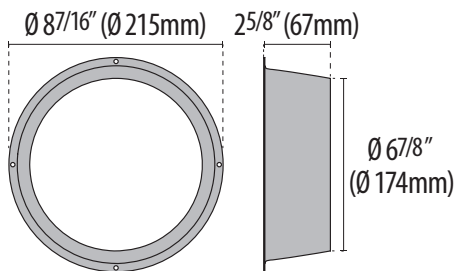
## 3107463



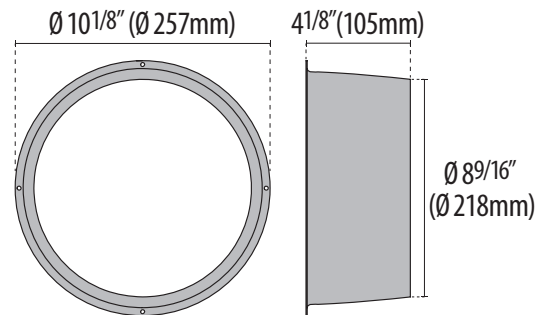
## LTS1A3571



## 3107466



## 3107469

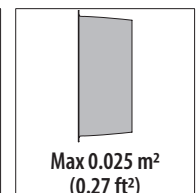
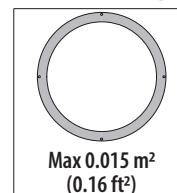
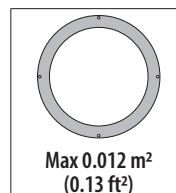
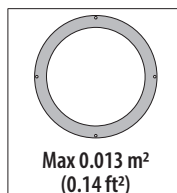
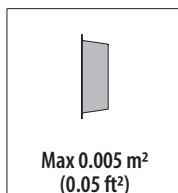
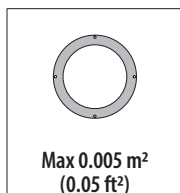
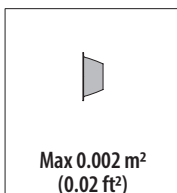
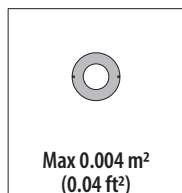


## 3107463

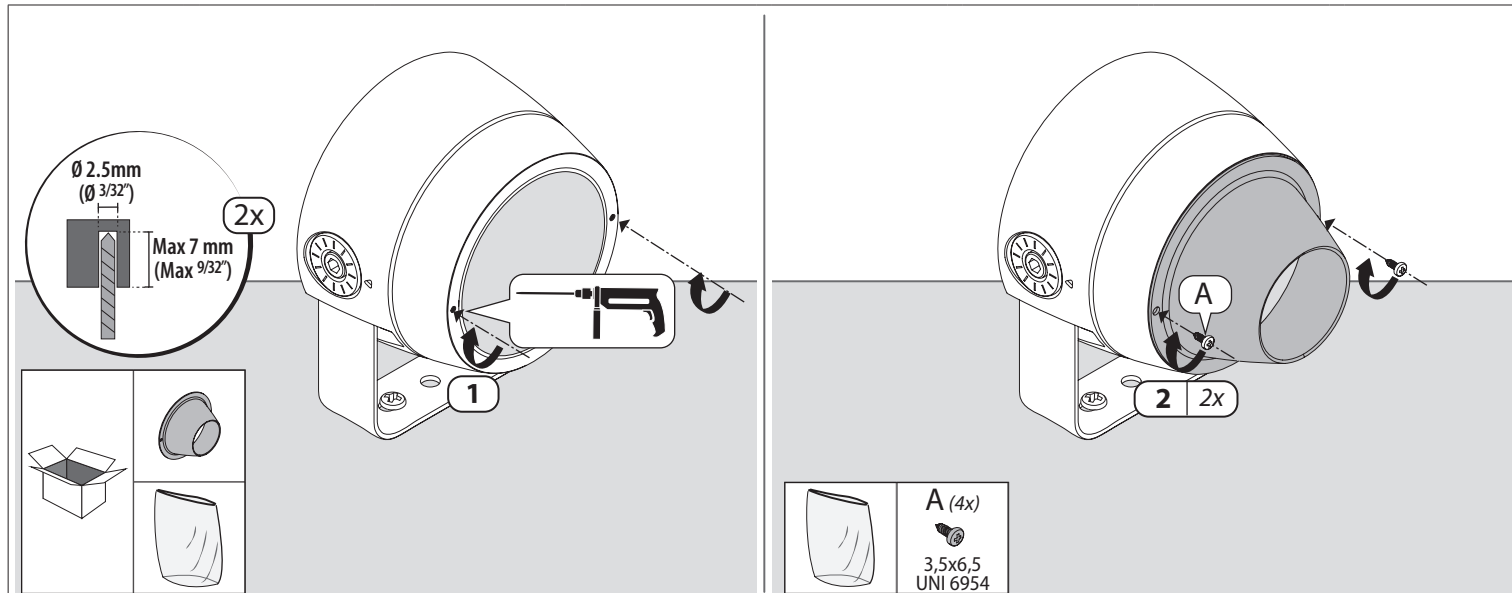
## LTS1A3571

## 3107466

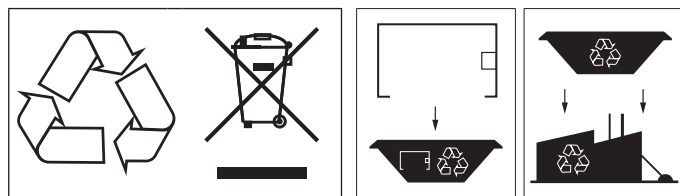
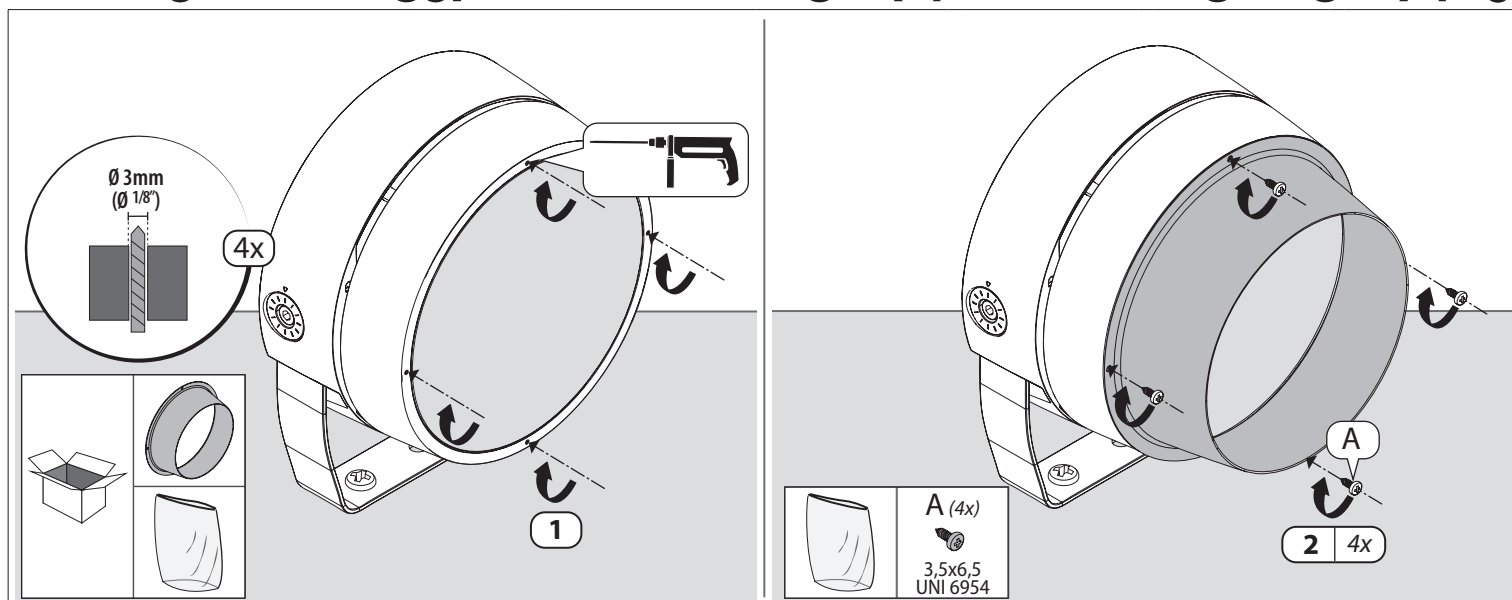
## 3107469



## TYK+ 10 + 3107463



## TYK+ 15 + LTS1A3571 / TYK+ 20 + 3107466 / TYK+ 30 + 3107469



Contact point indicated for the purposes of fulfilling the applicable EU directives and regulations:

**PERFORMANCE IN LIGHTING S.p.A.**  
Viale del Lavoro 9/11, 37030 Colognola ai Colli (VR) Italy  
Tel. +39 045 61 59 211 E-mail: [info.it@pil.lighting](mailto:info.it@pil.lighting)

According to the current regulations in the United Kingdom, the company responsible for placing the goods on the market in the United Kingdom is:

**GEWISS UK LTD - Unity House,**  
Compass Point Business Park, 9 Stocks Bridge Way, ST IVES  
Cambridgeshire, PE27 5JL, United Kingdom  
Tel: +44 1954 712757 E-mail: [gewiss-uk@gewiss.com](mailto:gewiss-uk@gewiss.com)