



Prima

High protection class exit sign luminaire: Compact version casing with convex opal cover. Single or double-sided escape route signage is provided thanks to self-adhesive films.

Versions for wall mounting and ceiling mounting or with additional accessories for wire or rod suspension mounting and mounting on brackets.



Mounting types



Mounting types with accessories



Technical data

Mounting options:
surface wall mounting, surface ceiling mounting, suspension,
bracket suspension, chain or wire

Body:
polycarbonate, white (RAL 9003)

Cover:
polycarbonate, opal

Reflector:
polycarbonate, white

Decentralized supply

Protection class: III

Mains supply:
24 V +/- 20% DC

Battery supply:
24 V +/- 20% DC

Ambient temperature:
-20 to +40 °C

Central supply

Protection class: I

Mains supply:
198V-254V/50Hz

Battery supply:
EVG: 110V - 276V
Sleb/Alog: 176V - 276V

Ambient temperature:
-20 to +40 °C

Decentralized supply / Central supply



Surface wall mounting (single faced indication), surface ceiling mounting, suspension, bracket suspension, chain or wire (double faced indication)¹



T93202-S24	T93202E	T93202S	T93202A	32m	32	2.1 W	2.9 W	6.0VA / 3.8W
------------	---------	---------	---------	-----	----	-------	-------	--------------

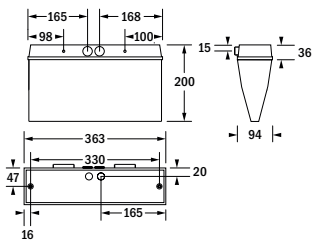
¹ For suspension mounting or bracket mounting, please order required accessories separately.

Please order mounting accessories separately

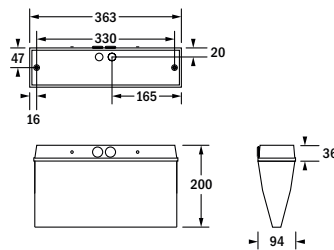
Order code	Description
F95112	Suspension rod, 300mm
F95113	Suspension rod, 500 mm
F95114	Suspension rod, 1000mm
F95115	Bracket suspension

Please order exit sign accessories separately

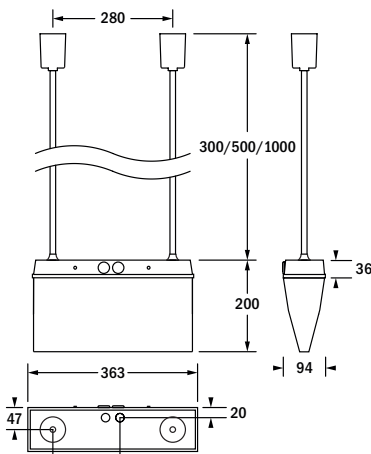
Order code	Description
F16167	Kit of exit sign films 
Fitting supplied complete with	
F16166	Kit of exit sign films 



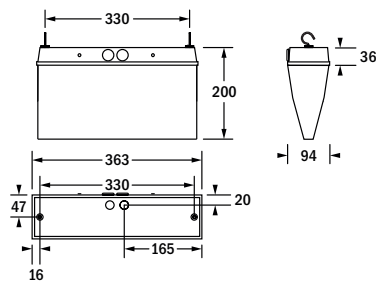
surface wall mounting



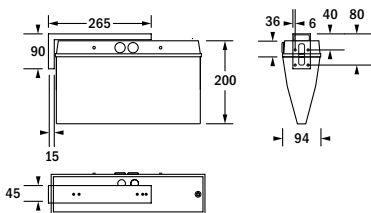
surface ceiling mounting



suspension rod



chain or wire



bracket suspension