



## S-IN

**Safety luminaire for steps.** Housing made of aluminium with lamella and frame bezel, exchangeable. Recessed housing for massive steps included in scope of delivery.

Version for recessed step mounting

### MOUNTING TYPES



### TECHNICAL DATA

**Housing:** Aluminium, grey (RAL 7037)  
**Cover:** Diecast aluminium, grey (RAL 7037)  
**Pane:** Glass, opal

**Service life  $L_{60B_{20}}$ :** 50.000 h  
**Color stability:** 3 SDCM  
**Color temperature:** 6.500 K  
**Color rendering index:** 80

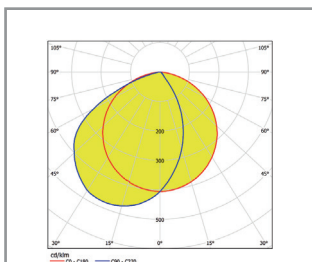


### DECENTRAL SUPPLY

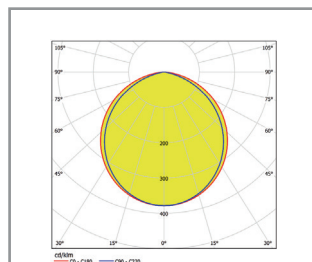
**Mains supply:** 24 V +/- 20 % DC  
**Battery supply:** 24 V +/- 20 % DC  
**Ambient temperature:** -20 °C to +40 °C  
**Protection class:** III

### CENTRAL SUPPLY

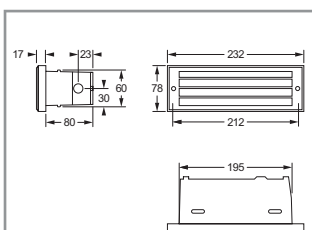
**Mains supply:** 198 V – 254 V / 50 Hz  
**Battery supply:** 176 V – 276 V  
**Ambient temperature:** -20 °C to +40 °C  
**Protection class:** I  
**Mains supply (alt.):** 90 V – 254 V / 50/60 Hz  
**Battery supply (alt.):** 90 V – 276 V



Light distribution curve, lamella bezel

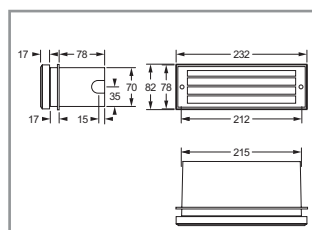


Light distribution curve, frame bezel

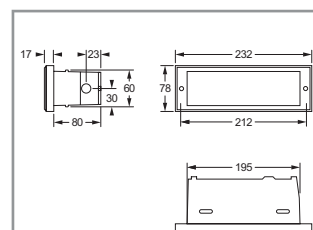


Cutout: 195 x 60 mm

Recessed step mounting, hollow,  
lamella bezel

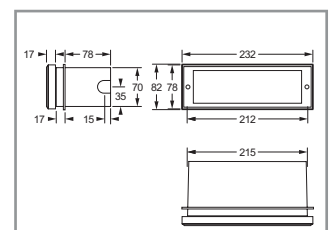


Recessed step mounting, massive,  
lamella bezel




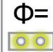
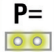
Cutout: 195 x 60 mm

Recessed step mounting, hollow,  
frame bezel


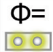

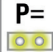


Recessed step mounting, massive,  
frame bezel

**SICURO** LED <sup>LED</sup> DECENTRAL SUPPLY

<b>Sicuro24</b> Order code	<b>LED</b> 	$\Phi$ = 	<b>P</b> = 
Recessed step mounting <sup>1</sup>			
<b>32031</b>	3	29 lm (lamella bezel) 133 lm (frame bezel)	4.3 W

**SICURO** LED <sup>LED</sup> CENTRAL SUPPLY

<b>Sicuro230</b> Order code	<b>LED</b> 	$\Phi$ = 	<b>S</b> ~ 	<b>P</b> = 
Recessed step mounting <sup>1</sup>				
<b>31031</b>	3	29 lm (lamella bezel) 133 lm (frame bezel)	8.9 VA / 4.5 W	

<sup>1</sup> Recessed step mounting massive and hollow possible.

Included in scope of delivery	
Order code	Description
-	Recessed mounting set for massive steps
-	Recessed mounting set for hollow steps