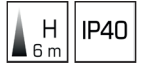




Alu-K

Emergency luminaire: Casing made of flat aluminium profiles with angular contours and a clear insert. High-power LED with lighting control through special lenses for asymmetrically-emitted light distribution (illumination of paths with 1 lx), or for symmetrically emitted light distribution (illumination of surfaces with 0.5 lx)

Versions for surface ceiling mounting.



Mounting types



Technical data

Mounting options:
surface ceiling mounting

Body:
aluminum, anodised

Display pane:
methacrylate, clear

Reflector:
specular aluminium

Decentralized supply

Protection class: III

Mains supply:
24 V +/- 20% DC

Battery supply:
24 V +/- 20% DC

Ambient temperature:
-20 to +40 °C

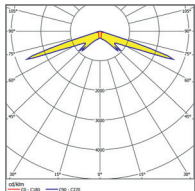
Central supply

Protection class: I

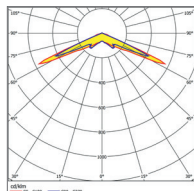
Mains supply:
198V-254V/50Hz

Battery supply:
EVG: 110V - 276V
Sleb/Allog: 176V - 276V

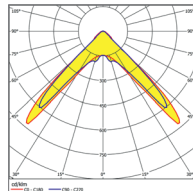
Ambient temperature:
-20 to +40 °C



asymmetric
wide beam



symmetric
wide beam to 3.5m



symmetric
wide beam to 7m

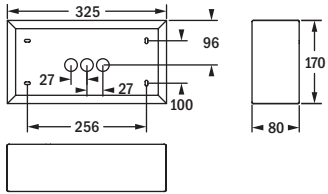
Decentralized / Central supply

SICURO S24	[EVG]	[SLEB]	[ALOG]	LED	P	Φ	P =	S ~	P =
Surface ceiling mounting									
T93027-S24	T93027E	T93027S	T93027A	1	2.5 W	Escape route lighting 232 lm Illumination of areas 235 lm	3.8 W	10.0VA / 5.0W	

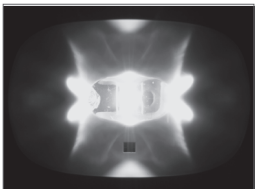
Please order accessories separately

Order code Description

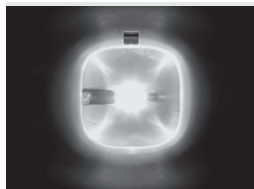
F95724 Wire guard



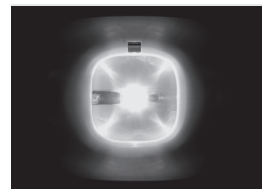
wall / surface ceiling mounting



asymmetric
wide beam



symmetric
wide beam to 3.5 m



symmetric
wide beam to 7 m