



#### GENERAL CHARACTERISTICS

<b>Equivalent Power</b>	2x14
<b>Power supply</b>	<b>SD version:</b> Universal Multi Voltage 93÷265 Vac - 50/60Hz 176÷250 Vdc
<b>Standard</b>	EN 60598-1, EN 60598-2-1, EN 60598-2-22 (fundamental requirements), UNI9554:1989, DIN 18032-3:1997-04, EN 62471 (Photobiological hazard), ATEX 2014/34/UE
<b>Protection grade</b>	IP66, IK09
<b>Working temp.</b>	-20 ÷ +40°C
<b>Mounting</b>	ceiling, suspension, busbar trunking
<b>Housing</b>	Polyester powder coated sheet steel RAL 7035 grey
<b>Head Caps</b>	Technopolymer PC+PBT
<b>Louvre</b>	Wide anti-glare aluminium
<b>Driver</b>	<b>SD version:</b> SELV electronic SD (Cos $\varphi \geq 0,96$ ) with intelligent dimming
<b>MTBF Control gear**</b>	80.000h
<b>Luminous flux maintenance**</b>	>60.000h (versioni 2x) (L80B20)
<b>Colour deviation</b>	3 SDCM

\*\* At environmental reference temperature of 25°C

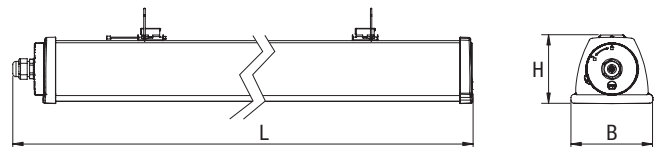
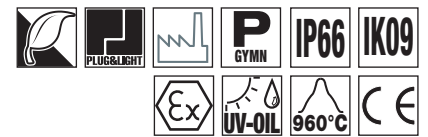
## Acciaio Eco LED

### Industrial LED luminaire

Acciaio Eco LED is the reply to the request for products with a high technological content for particularly demanding applications in high-risk areas. The steel housing and glass diffuser present both excellent mechanical resistance (IK09) and resistance to aggressive chemical agents. In the industrial field, it is ideally used in installations in environments with an explosive atmosphere, caused either by alterations of a gaseous type or by the presence of combustible powders suspended in the air (according to Standard ATEX 2014/34/ EU for zones 02 and 22).

The optic system is composed of a diffuser subdivided into cells for optimal light distribution, and a special microprismatic glass with very high light transmittance for greater visual comfort.

Acciaio Eco LED is suitable for heavy-duty use even in outdoor environments directly exposed to inclement weather: it is designed to resist mechanical vibrations and electromagnetic disturbances typical of industrial environments.



Power* W	• Dimensions (mm) •			Weight max kg
	L	B	H	
2x14	477	108	98,5	3.2

### Accessories

supplied

Order code Description

**15040** OPTICOM PHOTOSENSOR ACCIAIO

### Accessories

to be ordered separately

Order code Description

**15018** KIT ATEX ACCIAIO ECO

**20122** ORIENTABLE BRACKET

### Building automation

to be ordered separately

Order code Description

**20102** BUILDING AUTOMATION CENTRAL UNIT

**20124** BUILDING AUTOMATION CENTRAL UNIT WIFI

**20104** 2 INPUT INTERFACE – RADIO TRANSMITTER

**15022** BUILDING AUTOMATION RADIO MODULE

**15024** DALI MODULE

**15034** 1-10V MODULE

DOMOTIC  
RADIO  
MODULE

1÷10V  
MODULE

DALI  
MODULE

OPTIONAL MODULES TO EXTEND BEGHELLI SD TO RADIO CONTROL OR DALI / 1-10V SYSTEMS AND EMERGENCY



INTELLIGENT PHOTSENSOR

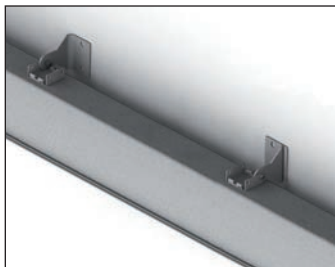
1. Autodimmer  
Natural Light

2. Autodimmer  
Dynamic Light

3. **opticom**  
TECHNOLOGY

Smartphone Interface  
to control and set up system

#### WALL BRACKET



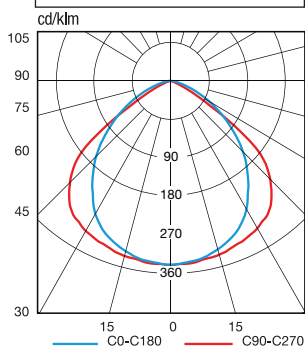
20122 to be ordered separately

#### Efficiency and dimming

The increase in luminous efficacy (lm/W) and the useful life of the device may vary significantly according to the degree of dimming. Assuming an average level of 50% of the luminous flux, the following results are obtained with the Acciaio Eco LED:

<b>Dimming SD</b>	<b>50%</b>
<b>Device duration</b>	<b>+40%</b>
<b>Luminous efficiency</b>	<b>+10%</b>

#### Polar Diagram SD



## Acciaio Eco LED

SmartDriver **SD**

Power W	Order code	Description	LED Power W	Colour Temp. K	Colour rendering	Power consumption Max W	N° LEDs	Flux of LEDs lm (Tj=25°C)	Flux of fixture lm	Luminous efficiency lm/W	Energy Class	Packaging
2x14	<b>A214ESD</b>	ACCIAIO E LED 2x14 SD 4000K	11	4000	>80	12	32	1650	1400	117	A++	1