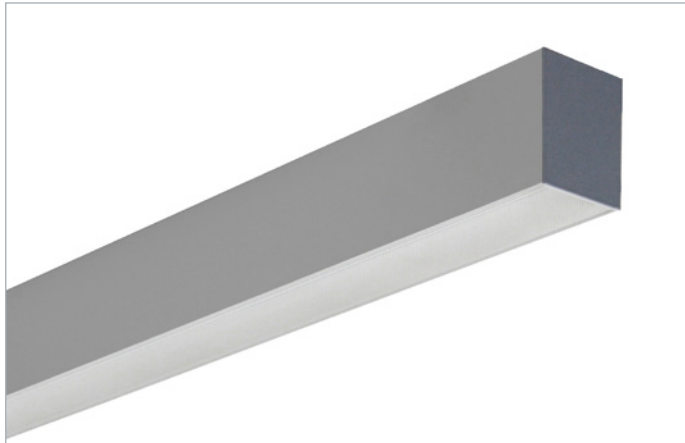


# Atomic TOP LED HCL 1,2m

Ceiling and suspended LED luminaire



## GENERAL CHARACTERISTICS

**Power supply** 198–264 VAC, 176–280 VDC

**Standard** EN 60598-1, EN 60598-2-1, EN 60598-2-22 (fundamental requirements), EN62471 (Photobiological hazard)

**Protection grade** IP40, IK05

**Working temp.** -20 ÷ +40°C

**Mounting** ceiling, suspended mounting

**Body** anodized aluminium profile with steel endings in grey

**Screen** microprismatic or opal optics

**Driver** DALI LED driver for Tunable White

**Control gear** 100 000 h

**Lifetime\*\***

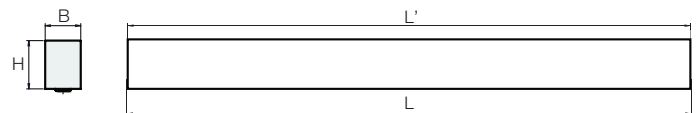
**Luminous flux** > 80 000 (L80B20)

**maintenance\*\***

**Colour deviation** 3 SDCM

**Colour Temp.** 2 700–6 500 K

\*\* At a reference working temperature of 25°C



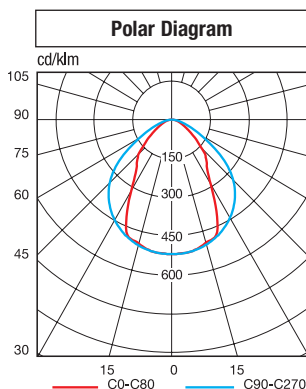
Length "L" including endings  
Length "L'" profile without endings

• Dimensions (mm) •				Weight
L	B	H	L'	kg
1137	60	81,5	1134	2,6

## Accessories

to be ordered separately

Order code	Description
<b>99-0275</b>	WIRE SUSPENSION, 1 pc, 200 cm (for one luminaire 2 pcs needed)
<b>99-0095</b>	TRANSPARENT POWER CABLE 200 cm (5x 1.5 mm <sup>2</sup> )



## Human Centric Lighting (HCL)

The effects of lighting on the biological rhythm of the human body have a direct impact on comfort, productivity and health in indoor environments. The model that should be followed is that dictated by nature with regard to light intensity, colour and direction, in harmony with our internal biological clock.

## Atomic TOP LED Human Centric Lighting (HCL)



Order code	Description	LED Power W	Colour Temp. K	Colour rendering	Power consumption Max W	N° LEDs	Flux of LEDs lm (Tj=25°C)	Flux of fixture lm	Luminous efficiency lm/W	Energy Class	Packaging
<b>T03-10140HW</b>	Atomic TOP LED 2700–6500K 1,2m	17	4000	>80	20	64	2400	1900	95	A+	1
<b>T03-10140HZ</b>	Atomic TOP LED 2700–6500K 1,2m	17	4000	>80	20	64	2400	1700	85	A+	1
<b>T03-10141HW</b>	Atomic TOP LED 2700–6500K 1,2m	30	4000	>80	34	128	4700	3100	91	A+	1
<b>T03-10141HZ</b>	Atomic TOP LED 2700–6500K 1,2m	30	4000	>80	34	128	4700	2700	79	A+	1

R<sub>a</sub>>90 on request, Z – opal cover, W – microprismatic cover