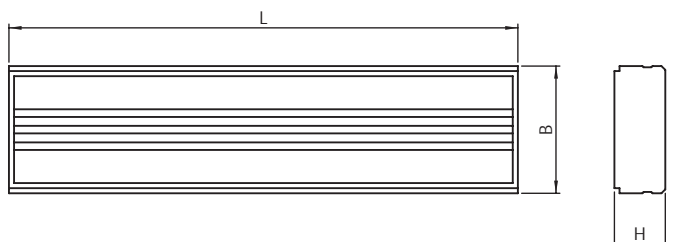


SD lighting module

SD wired LED device



Power W*	• Dimensions (mm) •			Weight kg
	L	B	H	
2x80	1416	68	37	1,7
2x18	568	68	37	0,8

SD lighting module

SmartDriver 

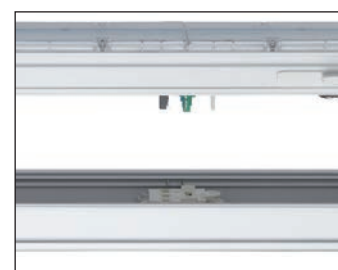
Power* W	Code Order	Description Description	Optic	LED Power W	Colour temperature K	Chromatic performance	Absorption max W	N° LED	LED Flux lm (Tj=25°C)	Fixture Flux lm	Luminous efficiency lm/W	Energetic class	Packaging
2x80	14500	RAIL LED 2x80 1500 WD SD 4K	Wide (90°)	59	4000	>80	65 (56***)	288	10000	9000	139	A++	1/10
2x80	14501	RAIL LED 2x80 1500 SP SD 4K	Sharp (25°)	59	4000	>80	65 (56***)	288	10000	9000	139	A++	1/10
2x80	14502	RAIL LED 2x80 1500 NR SD 4K	Narrow (60°)	59	4000	>80	65 (56***)	288	10000	9000	139	A++	1/10
2x80	14503	RAIL LED 2x80 1500 DS SD 4K	Double Asimm	59	4000	>80	65 (56***)	288	10000	9000	139	A++	1/10
2x80	14504	RAIL LED 2x80 1500 RS SD 4K	Right Asimm	59	4000	>80	65 (56***)	288	10000	9000	139	A++	1/10
2x80	14505	RAIL LED 2x80 1500 LS SD 4K	Left Asimm	59	4000	>80	65 (56***)	288	10000	9000	139	A++	1/10
2x80	14568	RAIL LED 2x80 1500 DA SD 4K	(120°)	59	4000	>80	65 (56***)	288	10000	9000	139	A++	1/10
2x18	14540	RAIL LED 2x18 600 WD SD 4K	Wide (90°)	23	4000	>80	26	144	4000	3600	140	A++	1/10
2x18	14541	RAIL LED 2x18 600 SP SD 4K	Sharp (25°)	23	4000	>80	26	144	4000	3600	140	A++	1/10
2x18	14542	RAIL LED 2x18 600 NR SD 4K	Narrow (60°)	23	4000	>80	26	144	4000	3600	140	A++	1/10
2x18	14543	RAIL LED 2x18 600 DS SD 4K	Double Asimm	23	4000	>80	26	144	4000	3600	140	A++	1/10
2x18	14544	RAIL LED 2x18 600 RS SD 4K	Right Asimm	23	4000	>80	26	144	4000	3600	140	A++	1/10
2x18	14545	RAIL LED 2x18 600 LS SD 4K	Left Asimm	23	4000	>80	26	144	4000	3600	140	A++	1/10
2x18	14569	RAIL LED 2x18 600 DA SD 4K	(120°)	23	4000	>80	26	144	4000	3600	140	A++	1/10

*** The power consumption has an auto derating to the power indicated in parenthesis if the product is powered by voltage less than 110 Vac.

SUSPENDED MOUNTING



FIXING SYSTEM



7 Optics, 7 different Polar diagrams

