



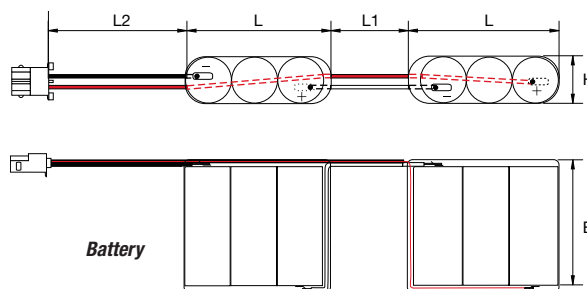
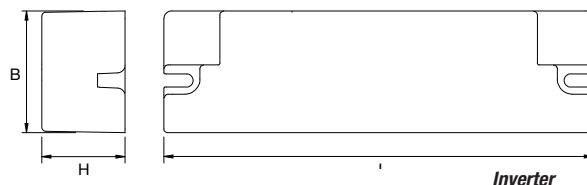
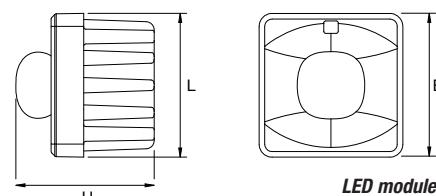
LED emergency module

with recessed Inverter

A high-performance auxiliary fixture for emergency lighting. Operation is subject to the installation of a traditional lighting fixture where the LED module and relative inverter with battery set are installed. The kit has 3 special high-transparency PMMA lenses, for the Lungaluce Altaluce and Largaluce versions, to obtain different dimensions of illuminated surface areas, and allow for an installation height from 3 to 7 metres. Each lens has a RAL 9010 white polycarbonate cover. The LED module has an elastic clip fastening system for T8 and T5 tubes. The high-efficiency LED has a die-cast aluminium heat sink.

GENERAL CHARACTERISTICS

- Power** 2 W
- Power supply** 230Vac ± 10% 50Hz
- Operation** HT, Permanent (SA)/Non Permanent (SE)/Public performance (PS) selectable with DIP switch in the versions LG and LGFM
- Standard** EN 60598-1, EN 60598-2-2, EN 60598-2-22, UNI EN 1838, UNI 11222
- Protection grade** according to the fixture in which it is mounted
- Autonomy** 1h, 2h, 3h selectable with DIP switch in the LG and LGFM versions
- Working temp.** 0°C ÷ +40°C
- Mounting** on fixtures with T5 and T8 pipes
- Housing** Aluminium and white Polycarbonate RAL 9010
- Optics** lenses in highly transparent PMMA
- Light source** LED



Accessories

supplied

Order code	Description
-	3 lenses: LUNGA, LARGA, ALTA with 3 different covers
-	2 SPRINGS FOR FIXING ON T8 AND T5 PIPES

	Power W	• Dimensions (mm) •				
		L	L1	L2	B	H
LED module with lens	18÷58	35			35	33
Inverter	-	114			32	22
Battery	-	40	70	80	50	4,5

** Indicative power for comparison with fluorescent tube fixtures

AT

Autotest

	W	Order code	Description	Model	Autonomy	Battery	N° LED	Flux* SE lm	Flux* SA lm	Absorption W	Weight kg	Pack
	2	19341	MODULE EM LED AT SE 1N	SE	1h	NiCd 7.2V 0.75Ah	1	250	-	1	0,2	6

LG

Logica

	W	Order code	Description	Model	Autonomy	Battery	N° LED	Flux* SE lm	Flux* SA lm	Absorption W	Weight kg	Pack
	2	19342	MODULE EM LED LG SE/SA/PS 1/2/3H	SE/SA/PS	1/2/3h	NiMH 7.2V 1.2Ah	1	250/190/165	165	1/6,5	0,2	6

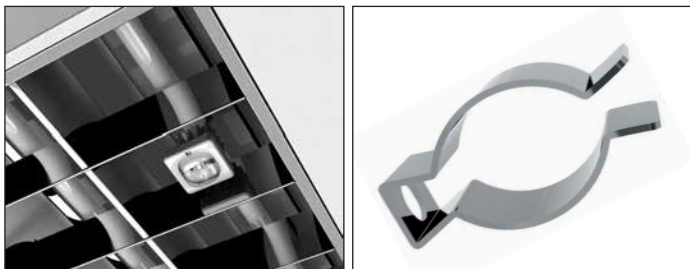
LGFM

Logica FM

	W	Order code	Description	Model	Autonomy	Battery	N° LED	Flux* SE lm	Flux* SA lm	Absorption W	Weight kg	Pack
	2	19343	MODULE EM LED LGFM SE/SA/PS 1/2/3H	SE/SA/PS	1/2/3h	NiMH 7.2V 1.2Ah	1	250/190/165	165	2/7,5	0,2	6

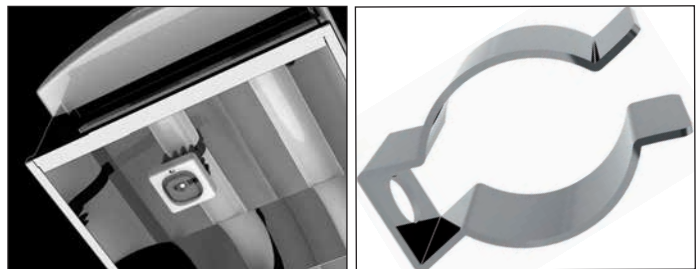
* Minimum flux guaranteed according to EN 60598-2-2

MOUNTING ON A FIXTURE WITH T5 LAMP HOLDERS



- STEEL CLIP supplied

MOUNTING ON A FIXTURE WITH T8 LAMP HOLDERS

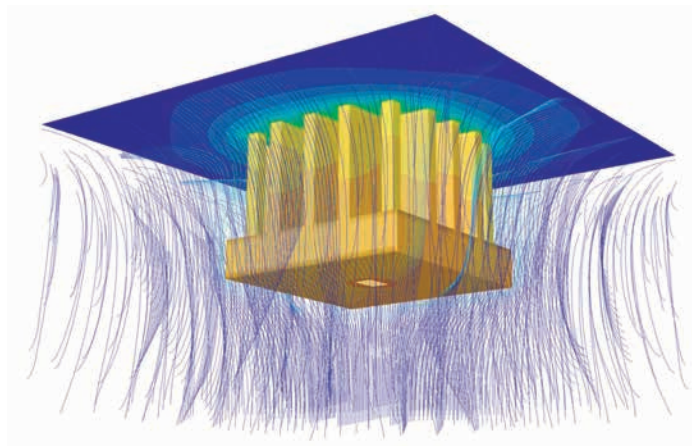


- STEEL CLIP supplied



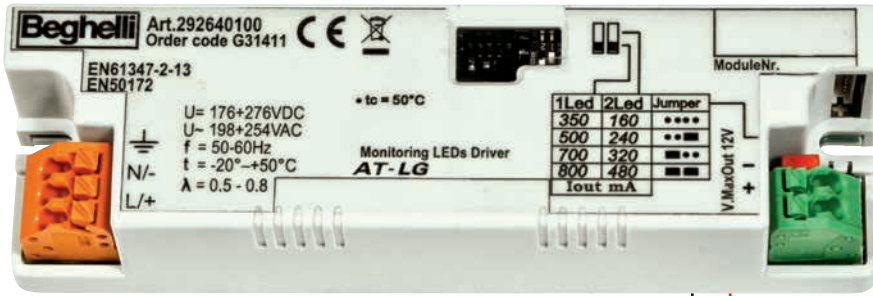
Thermofluidodynamic analysis: calculated heat dissipation

To ensure long duration and high performance of the LED source, a new technology has been used which simulates heat diffusion in the fixture: the thermofluidodynamic analysis allows you to foresee the working temperature of the various components so as to optimize the heat dissipation system.



LENS	Lamps	Cover
LUNGALUCE 3m	1	It covers an escape route of 17.1 m with 1 lux in the middle and >0.5 lux within 1 m of the middle
	2	Centre distance 18m between the lamps covering an escape route of 35.1 m with 1 lux in the middle and >0.5 lux within 1 m of the middle
LARGALUCE 3m	1	Covers a surface of 11.3m x 11.3m with at least 0.5lux with the exception of a 0.5 m perimeter
	4	Centre distance 13.2m covering a surface of 24.5m x 24.5m with at least 0.5lux with the exception of a 0.5 m perimeter
ALTALUCE 7m	1	Covers a surface of 12.4m x 12.4m with at least 0.5lux with the exception of a 0.5 m perimeter
	4	Centre distance 14.4m covering a surface of 26.8m x 26.8m with at least 0.5lux with the exception of a 0.5 m perimeter

One fixture for several applications

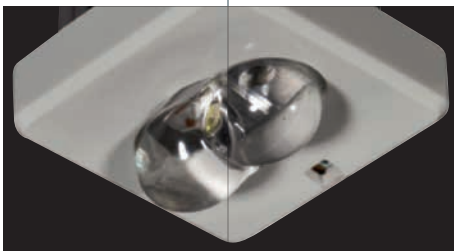


Dedicated inverter supplied

3.5 V
700 mA (SE)
350 mA (SA)

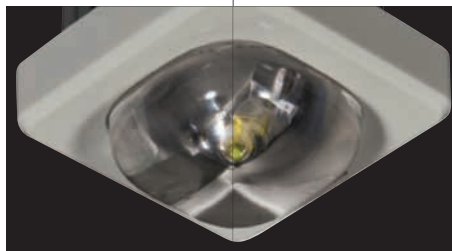


battery pack



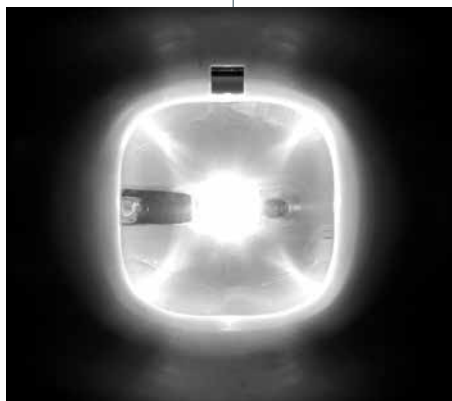
Lungaluce - long lens

mounted at a height of 3m it covers an escape route of 17.1m with 1 lux in the middle and > 0.5 within 1m



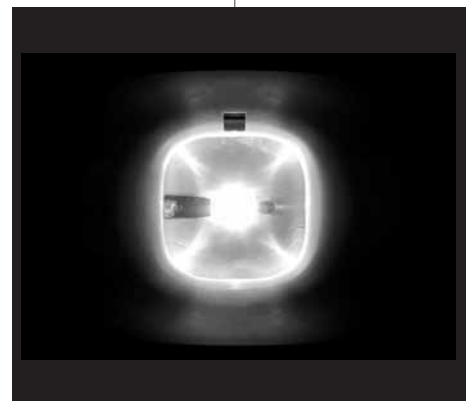
Largaluce - wide lens

mounted at a height of 3m it illuminates a surface of 11.3x11.3m at 0.5 lux



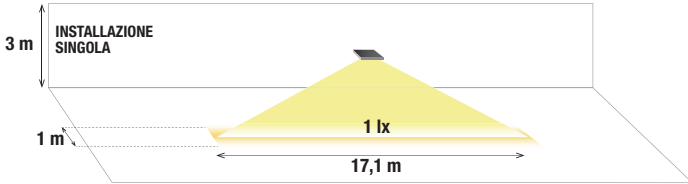
Altaluce - high lens

mounted at a height of 7m it illuminates a surface of 12.4x12.4m at 0.5 lux



Technical demonstration of light output on the ground

Lungaluce - long lens - mounting 3 m above the ground

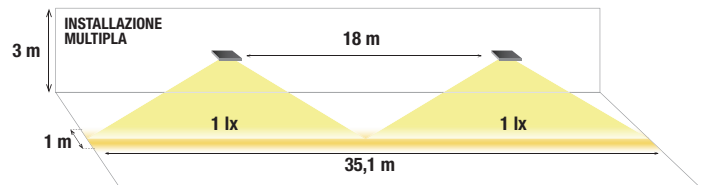


Single mounting

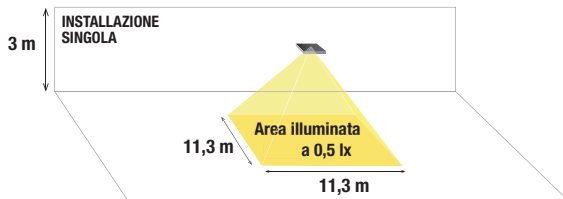
covers an escape route of 17.1 m with 1 lux in the middle and > 0.5 within 1 m

Multiple mounting, fixture centre distance 18 m

covers an escape route of 35.1 m with 1 lux in the middle and > 0.5 within 1 m



Largaluce - wide lens - mounting 3 m above the ground

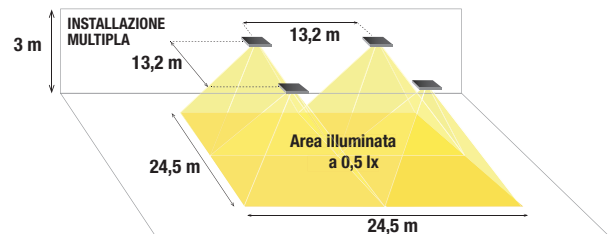


Single mounting

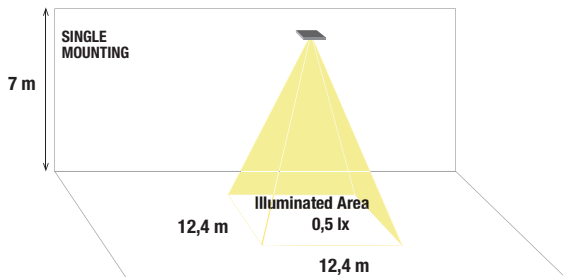
illuminates a surface of 11.3x11.3 m at 0.5 lux (128 sq.m)

Multiple mounting, fixture centre distance 13.2 m

illuminates a surface of 24.5x24.5 m at 0.5 lux (600 sq.m)



Altaluce - high lens - mounting 7 m above the ground



Single mounting

illuminates a surface of 12.4x12.4 m at 0.5 lux (154 sq.m)

Multiple mounting, fixture centre distance 13.7 m

illuminates a surface of 26.8x26.8 m at 0.5 lux (718 sq.m)

