



#### GENERAL CHARACTERISTICS

<b>Power</b>	230Vac ±10% 50/60 Hz
<b>Standards</b>	EN60598-1; EN60598-2-22; EN 62471
<b>Protection grade</b>	IP65 with ventilation valve, IK09
<b>Working temp.</b>	-25°C ÷ +50°C
<b>Installation</b>	ceiling, suspended, wall, floor
<b>Body</b>	Powder-coated die-cast aluminum with polyester RAL 7040
<b>Optic</b>	Circular lens in PMMA
<b>UGR</b>	<19
<b>Power supply</b>	SD, ED electronic
<b>Colour temperature</b>	4000K
<b>MTBF control gear*</b>	100.000h
<b>Luminous flux maintenance*</b>	>50,000h (L80B20)
<b>Colour deviation</b>	3 SDCM

\* At environmental reference temperature of 25 °C

## HighBay HP

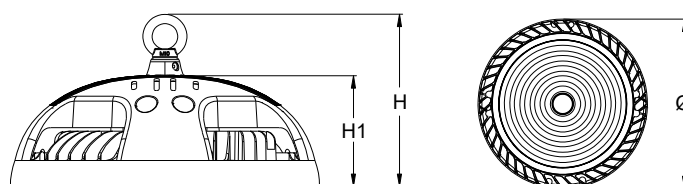
Ceiling, Suspended

HighBay HP is a high-performance lighting device. The high flow rate of 150 lm/W allows obtaining very high lighting performance suitable for placing in an industrial and logistics environment and applications with high ceiling, as with the old concept Highbay luminaires with metal halide lamps.

The body of the HighBay HP is in die-cast aluminum with dissipating fins that are integrated in the upper shell that houses the driver. The diffuser is made of PMMA, and it is possible to order the glass diffuser separately for installation of the product in harsh environments.

The product is equipped with a hook for suspension. On request, an adjustable bracket allowing installation in the ground or on the wall is available.

The SD version device can be controlled remotely to optimize flux and consumption (add-on radio module shall be integrated).



Power W	• Dimensions (mm) •			Weight kg
	H	H1	Ø	
100-150	167	108	300	3.5
200-240	189	125	360	3.5

### Accessories

supplied

Order Code	Description
-	BOLT FOR SUSPENDED MOUNTING
-	M20 CABLE GLAND WITH VENTILATION VALVE

### Accessories

to be ordered separately

Order Code	Description
40900	GLASS DIFFUSOR HP 100/150W
40901	GLASS DIFFUSOR HP 200/240W
40902	DIFFUSOR HP 120° 100/150W
40903	DIFFUSOR HP 120° HP 200/240W
40904	COVER 60° HP 100/150W
40905	COVER 60° HP 200/240W
40906	COVER 90° HP 100/150W
40907	COVER 90° HP 200/240W
40908	ADJUSTABLE BRACKET HP 100/150W
40909	ADJUSTABLE BRACKET HP 200/240W

### Building automation

to be ordered separately

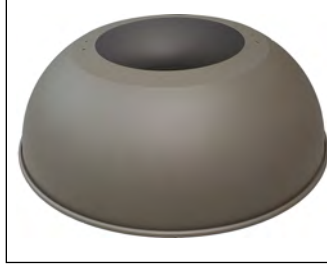
Order Code	Description
20102	BUILDING AUTOMATION CENTRAL UNIT
20124	BUILDING AUTOMATION CENTRAL UNIT WIFI
20104	2 INPUT INTERFACE – RADIO TRANSMITTER

## DIFFUSOR



<b>40900</b>	GLASS DIFFUSOR HP 100/150W	to be ordered separately
<b>40901</b>	GLASS DIFFUSOR HP 200/240W	to be ordered separately
<b>40902</b>	DIFFUSOR HP 120° 100/150W	to be ordered separately
<b>40903</b>	DIFFUSOR HP 120° HP 200/240W	to be ordered separately

## ALLUMINIUM COVER



on image: 40906  
cover height: 160mm

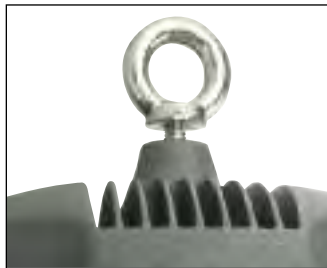
<b>40904</b>	COVER 60° HP 100/150W	to be ordered separately
<b>40905</b>	COVER 60° HP 200/240W	to be ordered separately
<b>40906</b>	COVER 90° HP 100/150W	to be ordered separately
<b>40907</b>	COVER 90° HP 200/240W	to be ordered separately

## ADJUSTABLE BRACKET



<b>40908</b>	ADJUSTABLE BRACKET HP 100/150W	to be ordered separately
<b>40909</b>	ADJUSTABLE BRACKET HP 200/240W	to be ordered separately

## SUSPENDED MOUNTING



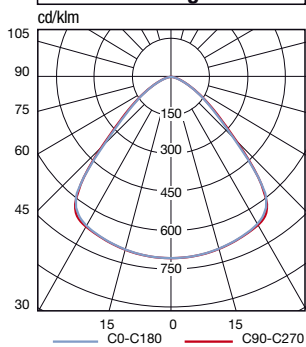
**SPECIAL VARIANTS: COLOUR TEMPERATURE ON REQUEST**  
Contact the Beghelli sales network

## Efficiency and dimming

The increase in luminous efficacy (lm/W) and the useful life of the device may vary significantly according to the degree to which it is dimmed. Assuming an average level of 50% of the luminous flux, the following results are obtained with the H250/400 LED:

<b>Dimming</b>	<b>50%</b>
<b>Device duration</b>	<b>+40%</b>
<b>Luminous efficiency</b>	<b>+10%</b>

## Polar diagram



## HighBay HP

Power W	Order code	Description	Optic	Power LED W	Colour temperature K	Colour rendering	Power consum. max W	N° LED	Flux of LEDs lm (Tj=25°C)	Flux fixture lm	Luminous efficiency lm/W	Energy class	Packaging
100	<b>40204</b>	HIGHBAY HP 100W 90° 4K ED	90°	90	4000	>80	100	180	18000	15000	150	A++	1
150	<b>40205</b>	HIGHBAY HP 150W 90° 4K ED	90°	135	4000	>80	150	306	27000	22500	150	A++	1
200	<b>40206</b>	HIGHBAY HP 200W 90° 4K ED	90°	180	4000	>80	200	306	36000	30000	150	A++	1
240	<b>40207</b>	HIGHBAY HP 240W 90° 4K ED	90°	216	4000	>80	240	306	43000	36000	150	A++	1
100	<b>40224</b>	HIGHBAY HP 100W 90° 4K SD	90°	90	4000	>80	100	180	18000	15000	150	A++	1
150	<b>40225</b>	HIGHBAY HP 150W 90° 4K SD	90°	135	4000	>80	150	306	27000	22500	150	A++	1
200	<b>40226</b>	HIGHBAY HP 200W 90° 4K SD	90°	180	4000	>80	200	306	36000	30000	150	A++	1
240	<b>40227</b>	HIGHBAY HP 240W 90° 4K SD	90°	216	4000	>80	240	306	43000	36000	150	A++	1