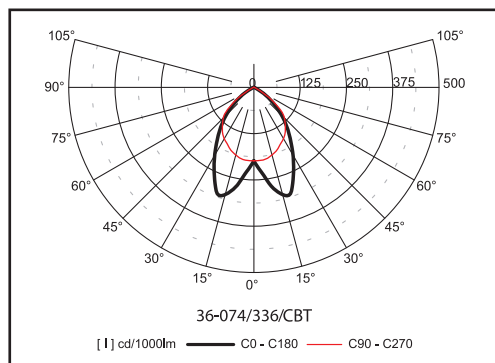
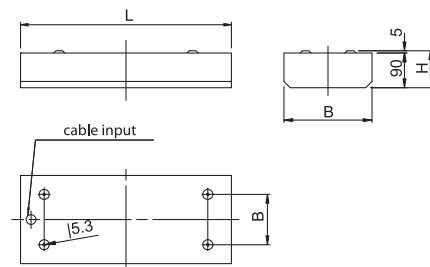


# arietis | 36-07



## Ceiling luminaires IP65



### Material:

- body: a steel sheet finished by powder technology varnishing
- color: white RAL 9003
- louvre: highly polished parabolic louvre
- cover: safety hardened glass

**Degree of protection:** IP 65

**Rated voltage:** 230V/50Hz

**Control gear:** low loss ballast or electronic ballast, dimmable ballast by request; the luminaires are offered also in emergency version

**Mounting:** built-up on a ceiling

**Application:** hospitals, laboratories, premises with high humidity and dustiness, premises demanding high hygienic standards

Code	Power	Lamp	Cap	LxBxH (mm)	Kg
36-073/236/BT	2x36W	T8 lamp	G13	1292x381x95	12,0
36-073/258/BT	2x58W	T8 lamp	G13	1592x381x95	14,3
36-073/228/CBT	2x28W	T5 lamp	G5	1292x381x95	12,0
36-073/235/CBT	2x35W	T5 lamp	G5	1592x381x95	14,3
36-073/414/CBT	4x14W	T5 lamp	G5	682x677x95	9,0
36-074/236/BT	2x36W	compact fl. lamp	2G11	482x414x95	6,2
36-074/255/CBT	2x55W	compact fl. lamp	2G11	604x414x95	6,6
36-074/336/BT	3x36W	compact fl. lamp	2G11	482x565x95	6,9
36-074/355/CBT	3x55W	compact fl. lamp	2G11	604x565x95	7,3

- E (low loss ballast) - C (electronic ballast)