

# Pluraluce65

**High protection class emergency luminaire:** Flat design casing and cover in stainless steel. High-power LED with lighting control through special lenses for asymmetrical-emitted light distribution (illumination of paths with 1 lx), or for symmetrically emitted light distribution (illumination of surfaces with 0.5 lx).

Versions for recessed ceiling mounting



Mounting types



## Technical data

Mounting options:  
recessed ceiling mounting

Body:  
stainless steel, white (RAL 9003)  
stainless steel, V2A

Cover:  
methacrylate, clear

Lens:  
methacrylate, clear

## Decentralized supply

Protection class: III

Mains supply:  
24 V +/- 20% DC

Battery supply:  
24 V +/- 20% DC

Ambient temperature:  
-20 to +40 °C

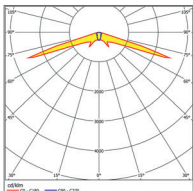
## Central supply

Protection class: I

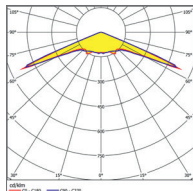
Mains supply:  
198V-254V/50Hz

Battery supply:  
EVG: 110V - 276V  
Sleb/Alog: 176V - 276V

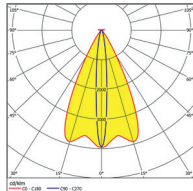
Ambient temperature:  
-20 to +40 °C



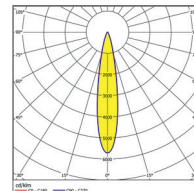
asymmetric  
wide beam



symmetric  
wide beam to 3.5m



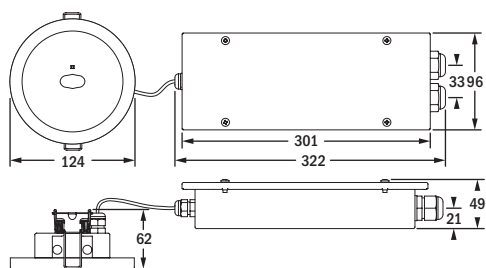
asymmetric  
deep beam



symmetric  
deep beam

## Decentralized / Central supply

SICURO <sub>S24</sub>	[EVG]	[SLEB]	[ALOG]		LED	P	Φ		P =	S ~	P =
Recessed ceiling mounting suitable for escape route lighting, stainless steel white											
<b>T93311-S24</b>	<b>T93311E</b>	<b>T93311S</b>	<b>T93311A</b>		1	2.5W	198 lm		3.8W		10.0VA / 5.0W
Version in stainless steel V2A											
<b>T93313-S24</b>	<b>T93313E</b>	<b>T93313S</b>	<b>T93313A</b>		1	2.5W	198 lm		3.8W		10.0VA / 5.0W
Recessed ceiling mounting suitable for area lighting, stainless steel white											
<b>T93310-S24</b>	<b>T93310E</b>	<b>T93310S</b>	<b>T93310A</b>		1	2.5W	199 lm		3.8W		10.0VA / 5.0W
Version in stainless steel V2A											
<b>T93312-S24</b>	<b>T93312E</b>	<b>T93312S</b>	<b>T93312A</b>		1	2.5W	199 lm		3.8W		10.0VA / 5.0W



recessed ceiling mounting (hollow ceiling)

ceiling cutout: 100mm diameter

thickness of the ceiling plate: 2mm - 40mm