

LED Panel 600x600

Ceiling, Suspended, M600



GENERAL CHARACTERISTICS

Power supply **SD Luminaire:** Universal Multi Voltage
93÷265Vac 50÷60Hz 176÷250Vdc
ED Luminaire: 230Vac ±10% 50Hz

Standard EN60598-1; EN60598-2-22;
EN 62471

Protection grade IP20/40, IK05

Working temp. -20°C +40°C

Mounting M600 recessed mounting, ceiling
mounting, suspended mounting,
plasterboard mounting

Body Aluminium, white

Optic UV-stabilised screen
fireproof, microprismatic,
anti-reflective, PMMA light guide

CRI >90

UGR <19

Luminance a 65° <3000 cd/mq

Driver **SD Luminaire:** SELV Electronic SD
(Cos j ≥ 0, ≥ 0.96) with smart dimming
ED Luminaire: SELV Electronic ED
(Cos j ≥ 0.95)

Colour temperature 4000K

MTBF Control gear** 65,000h

**Luminous flux
maintenance*** >50,000h (L80B20)

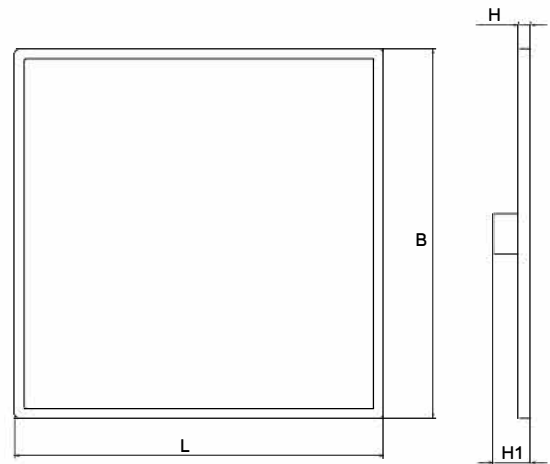
Colour deviation 3 SDCM

* At the reference working temperature of 25°C

Innovative LED source luminaire characterised by great versatility of use. Thanks to its very low thickness and low weight, it can be suspended even in prestigious architectural environments.

The extremely high efficiency of the LEDs and the opal microprismatic diffuser screen allow this revolutionary luminaire to be used in environments that, due to the prolonged presence of people, require diffuse lighting and excellent visual comfort, such as offices, schools, hotels and shopping malls.

An emergency kit consisting of an inverter and a battery is also available to ensure the operation of the luminaire even in the event of a black-out; this kit is available in both the smart AT and LG versions and with the brand new Plug & Light inverter with immediate connection.



Type	• Dimensions (mm)			• Weight	kg
	L	B	H	H1	
600x600	595	595	9	41	3.5

Accessories

to be ordered separately

Order code	Description
70033	SUSPENDED MOUNTING KIT
70048	PLASTERBOARD BRACKETS
20097	CEILING FRAME 600x600

Home automation



to be ordered separately

Order code	Description
20102	HOME AUTOMATION CONTROL UNIT
20124	WiFi HOME AUTOMATION CONTROL UNIT
20104	HOME AUTOMATION REMOTE CONTROL TRANSMITTER
15022	HOME AUTOMATION REMOTE CONTROL MODULE
15024	DALI MODULE
15034	1-10V MODULE

Accessories



included

Order code	Description
15039	OPTICOM SMART PHOTOSENSOR

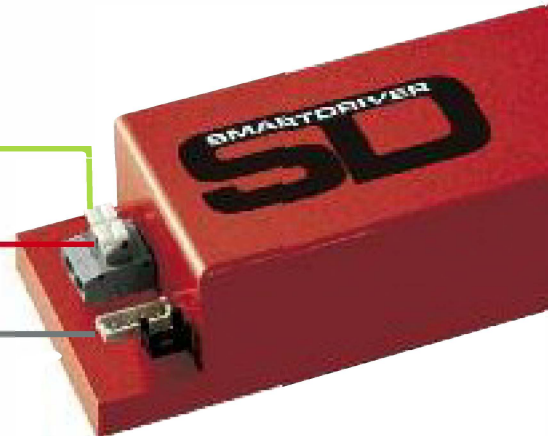
MODULO
RADIO
DOMOTICO

MODULO
1÷10V

MODULO
DALI

MODULO
PLUG&LIGHT

SMART MODULES THAT CAN BE CONNECTED TO THE BEGHELLI SMARTDRIVER



PHOTOSENSOR INTELLIGENTE

1. Autodimmer
Natural Light

2. Autodimmer
Dynamic Light

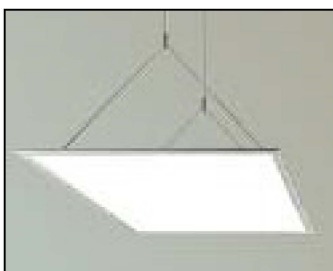
3. **opticom**
TECHNOLOGY

Smartphone Interface
Luminaire programming and control system

RECESSED MOUNTING



SUSPENDED MOUNTING



70033 SUSPENSION KIT

CEILING MOUNTING



20097 CEILING FRAME 600X600

PLASTERBOARD MOUNTING



70048 PLASTERBOARD BRACKETS

Efficacy and dimming

The increase in luminous efficacy (lm/W) and the useful life of the luminaire can vary considerably depending on the level of dimming to which it is subjected. The data to the right refers to the SD LED Panel considering an average dimming level equal to 50% of the luminous flux:

Dimming **50%**
Luminaire useful life +40%
Luminous efficiency +15%

SPECIAL VERSIONS: COLOUR TEMPERATURE ON REQUEST
 Contact Beghelli's sales network

EMERGENCY WITH LED INVERTER

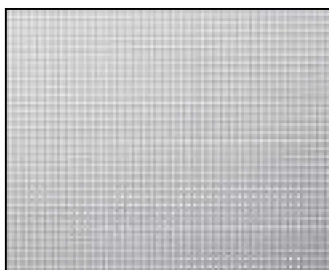
TR AT LG LGFM

- 19358** PLUG&LIGHT LED INVERTER SE/SA 1H 20-60V to be ordered separately
- 19359** PLUG&LIGHT LED INVERTER SE/SA 3H 20-60V to be ordered separately
- 19355*** FULL LED INVERTER LG 6W 55V 123H to be ordered separately
- 19372*** FULL LED INVERTER LG 8W 55V 123H to be ordered separately
- 19390*** EXTREME INVERTER AT/LG AR 15W 55V LTO to be ordered separately
- 19391*** EXTREME INVERTER AT/LG AR 15W 55V LiFe to be ordered separately

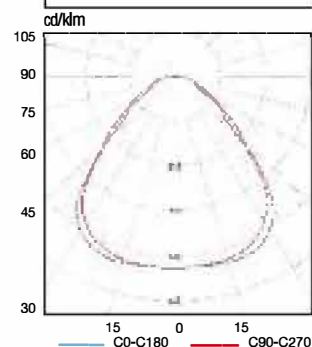
* IP65 cover required (order code 19376)

LG technology inverters can be turned into LGFM using a special accessory, code 19375

PRISMATIC SCREEN



POLAR DIAGRAM



LED Panel 600x600

SmartDriver electronic ballast



Order Code	Description	Power LED W	Temperature Colour K	Yield Chromatic	Absorption Max W	N° LED	Flux LED Im (Tj=25°C)	Flux Luminaire Im	Efficiency Luminous Im/W	Class Energy	Pack
40107	LED PANEL 418 M600 U19 C90 SD 4K	32	4000	>90	36	240	4800	4000	110	A++	1

LED Panel 600x600

Eco Driver Electronic ballast



Order Code	Description	Power LED W	Temperature Colour K	Yield Chromatic	Absorption Max W	N° LED	Flux LED Im (Tj=25°C)	Flux Luminaire Im	Efficiency Luminous Im/W	Class Energy	Pack
40101	LED PANEL 418 M600 U19 C90 ED 4K	32	4000	>90	36	240	4800	4000	110	A++	1