

# Elettrinverter Logica



Electronic power supply unit for emergency lighting to illuminate fluorescent lamps (T8, T5 and TCL type). The autonomy of the device can be selected independently from the bulb - either 1 hour or 3 hours. The luminous flux is optimised in accordance with the range selected.

Operation at constant power. Tube switch-on with preheating of cathode and cathode heating control, for long tube life. **Rapid charging system, 12 hour charge time. Suitable for hospitals in 3 h configurations.**

## GENERAL CHARACTERISTICS

**Power range** 13÷80 W

**Power supply** 230Vac ± 10% 50Hz

**Operation** Maintained (SA)

**Standard** EN 61347-1, EN 61347-2-7

**Protection grade** according to the fixture in which it is mounted

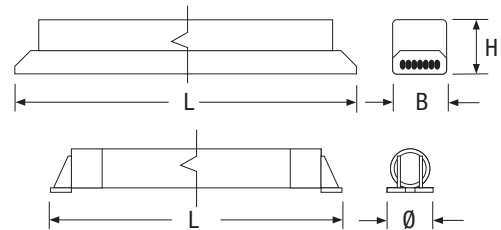
**Autonomy** 1h - 2h - 3h, 1-2.20h

**Working temp.** 0 + 40°C (Battery)  
-20 + 50°C (Inverter)

**Max enclosure temperature** 70°C

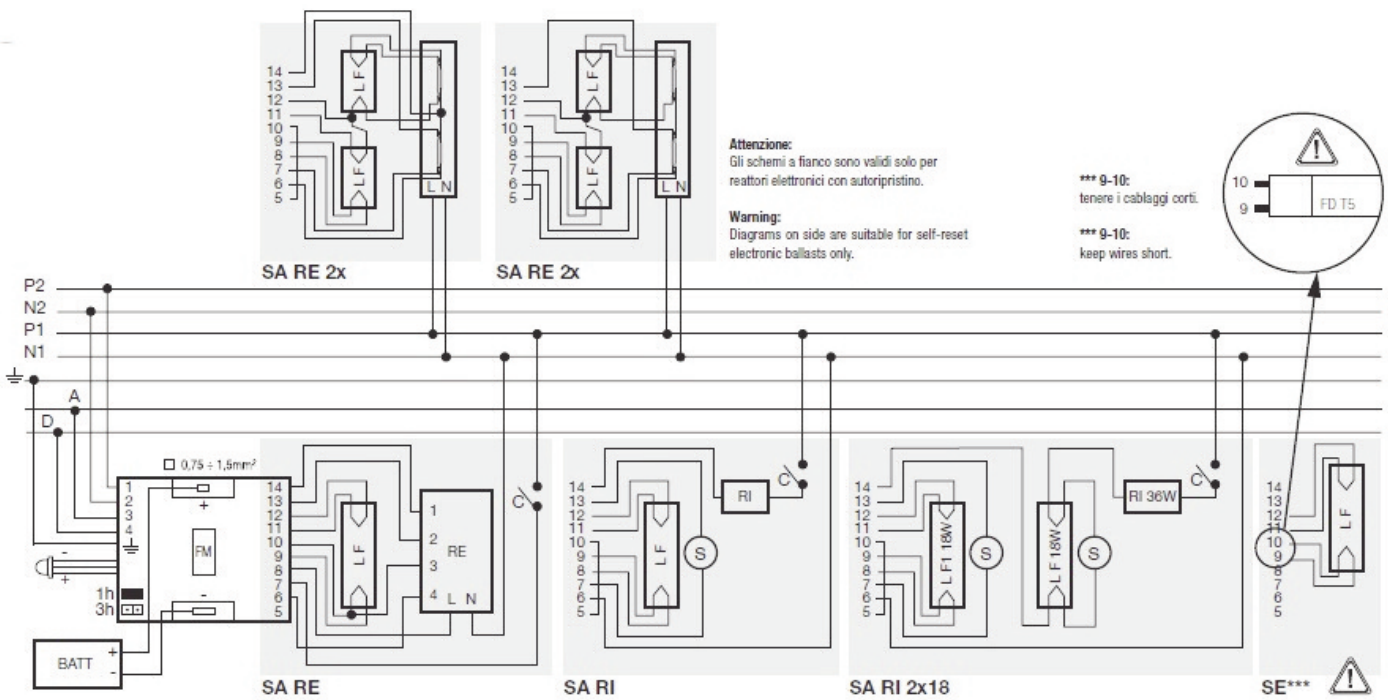
**Charging time** with 30kHz lamp 12 hours

**Housing** polycarbonate



Order code Inverter	Dimensions Inverter (mm)			Dimensions battery (mm)	
	L	B	H	L	Ø
12126	330	30	30	335	30

Battery NiCd 7.2V 2.2Ah		Autonomy 1h	Autonomy 2h	Autonomy 3h
<b>Battery current</b>		1.7A		0.6A
Lamp	Socket	Lamp Power	Flux	Flux
T8	G13	18	48%	15%
		36	24%	6%
		58	14%	3%
T5	G5 FH	14	65%	22%
		21	42%	15%
		28	28%	-
T5	G5 FQ	35	21%	-
		24	41%	10%
		39	25%	-
		49	15%	-
		54	13%	-
TC-L	2G11	80	8%	-
		24	41%	10%
		36	24%	6%
		40	19%	5%
		55	9%	-
TCD*, TCE		13		
TCTE		18		
*only 4 couplings		26		
PIN with starter		32		
separate		42		



## LG

Logica

	W	Order code	Description	Model	Autonomy	Battery	Absorption max. W	Weight kg	Pack
<b>H</b>	18÷58	<b>12126</b>	ELETT 935 2 LG 14-80SA	SA	1-3h	NiCd 7.2V 2.2Ah	-	0.7	12
	18÷58	<b>12126P</b>	ELETT 935 2 PERFORMER	SA	1-3h	NiCd 7.2V 4Ah	-	1.0	12

## LGFM

Logica FM

	W	Order code	Description	Model	Autonomy	Battery	Absorption max. W	Weight kg	Pack
<b>H</b>	18÷58	<b>12126FM</b>	ELETT 935 2 LG FM 14-80SA	SA	1-2.20h	NiCd 7.2V 2.2Ah	-	0.8	12
	18÷58	<b>12126PFM</b>	ELETT 935 2 LG FM PERFORMER	SA	1-3h	NiCd 7.2V 4Ah	-	1.0	12