



Kubus

Emergency luminaire: Casing made of flat sheet steel profiles with angular contours and a clear insert. High-power LED with lighting control through special lenses for asymmetrically-emitted light distribution (illumination of paths with 1 lx), or for symmetrically emitted light distribution (illumination of surfaces with 0.5 lx)

Versions for surface ceiling mounting.



Mounting types



Technical data

Mounting options:
surface ceiling mounting

Body:
sheet steel, white (RAL 9003)

Cover:
methacrylate, clear with vertical prisms

Reflector:
specular aluminium

Decentralized supply

Protection class: III

Mains supply:
24 V +/- 20% DC

Battery supply:
24 V +/- 20% DC

Ambient temperature:
-20 to +40 °C

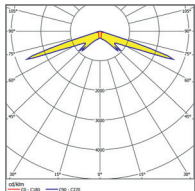
Central supply

Protection class: I

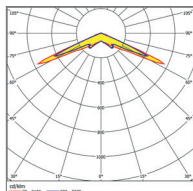
Mains supply:
198V-254V/50Hz

Battery supply:
EVG: 110V - 276V
Sleb/Alog: 176V - 276V

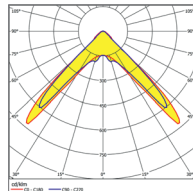
Ambient temperature:
-20 to +40 °C



asymmetric
wide beam



symmetric
wide beam to 3.5m



symmetric
wide beam to 7m

Decentralized / Central supply



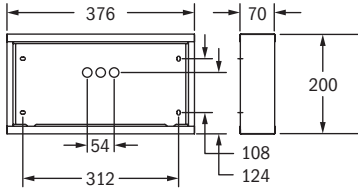
Surface ceiling mounting

T93017-S24	T93017E	T93017S	T93017A	1	2.5 W	escape route lighting 232 lm for area lighting 235 lm	3.8 W	10.0VA / 5.0W
------------	---------	---------	---------	---	-------	--	-------	---------------

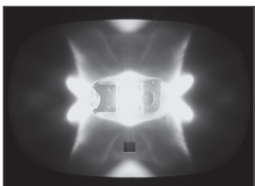
Please order accessories separately

Order code Description

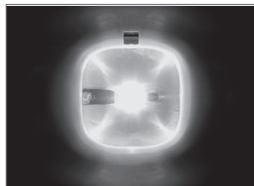
F95032 Wire guard



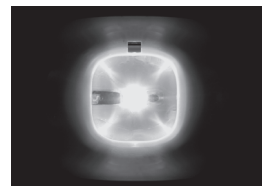
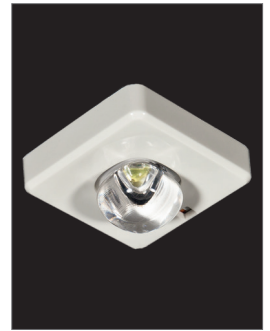
wall / surface ceiling mounting



asymmetric
wide beam



symmetric
wide beam to 3.5m



symmetric
wide beam to 7m