



Pluraluce

Emergency luminaire: Flat design casing in sheet steel and Polycarbonate cover. High-power LED with lighting control through special lenses for asymmetrically-emitted light distribution (illumination of paths with 1 lx), symmetrically emitted light distribution (illumination of surfaces with 0.5 lx) and 1-sided asymmetrically-emitted light distribution (illumination of safety device with 5 lx).

Versions for surface ceiling mounting.



Mounting types



Technical data

Mounting options: surface ceiling mounting

Body: sheet steel

Cover: polycarbonate, white (RAL 9010)¹

Lens: methacrylate, clear

¹ Cover in other colours on request

Decentralized supply

Protection class: III

Mains supply:
24 V +/- 20% DC

Battery supply:
24 V +/- 20% DC

Ambient temperature:
-10 to +40 °C

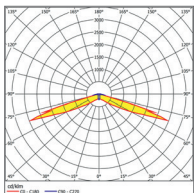
Central supply

Protection class: I

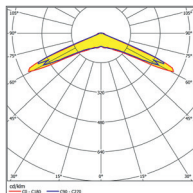
Mains supply:
198V-254V/50Hz

Battery supply:
EVG: 110V - 276V
Sleb/Allog: 176V - 276V

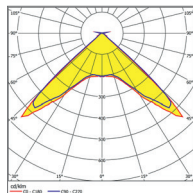
Ambient temperature:
-10 to +40 °C



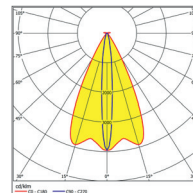
asymmetric
wide beam



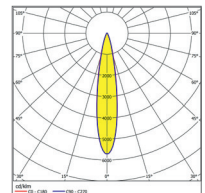
symmetric
wide beam to 3.5m



symmetric
wide beam to 7m



asymmetric
deep beam



symmetric
deep beam

Decentralized / Central supply

SICURO S24	[EVG]	[SLEB]	[ALOG]	LED	P	Φ	P =	S ~	P =
-------------------	--------------	---------------	---------------	-----	---	---	-----	-----	-----

Surface ceiling mounting suitable for escape route lighting

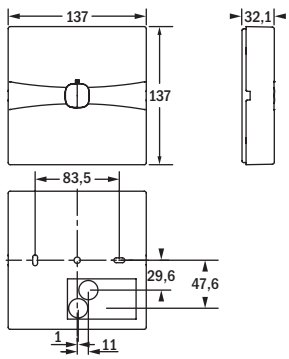
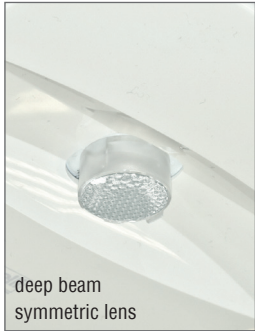
TB16747-S24	TB16739	TB16745	TB16747	1	2.5W	218lm	3.8W	10,0VA / 5,0W
--------------------	----------------	----------------	----------------	---	------	-------	------	---------------

Surface ceiling mounting suitable for area lighting with 2 changeable lenses

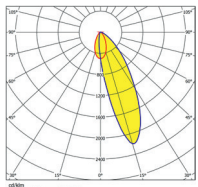
TB16746-S24	TB16738	TB16744	TB16746	1	2.5W	238lm	3.8W	10,0VA / 5,0W
--------------------	----------------	----------------	----------------	---	------	-------	------	---------------

Please order accessories separately

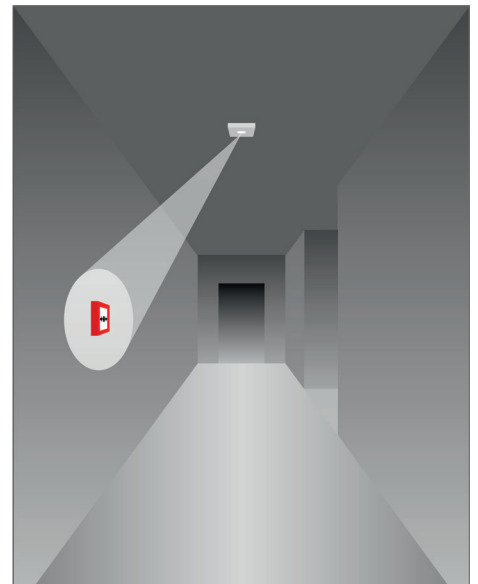
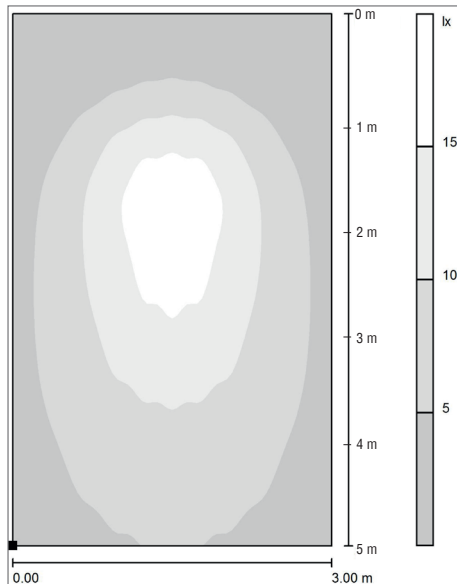
Order code	Description
F95807	Narrow beam lens for surface / recessed ceiling mounted luminaires (area lighting) for escape route lighting at mounting heights > 7.5 m
F95808	Narrow beam lens for surface / recessed ceiling mounted luminaires (area lighting) for area lighting at mounting heights > 7.5 m
F95815	Asymmetrical lens for surface / recessed ceiling mounted luminaires (area lighting) for illumination of the safety devices with 5 lx



wall / surface ceiling mounting (ds / cs)¹



1-sided
asymmetric



¹ cs= central supply ds = decentralized supply