



## CENTRAL TEST DEVICE LOGICA FM

Automatic test device according to DIN EN 62034 for monitoring and control of luminaires, supply modules and supply devices with self-contained supply and integrated Logica FM interface.

Communication between test device Logica FM and 320 luminaires max., supply modules and supply devices with self-contained supply and integrated Logica FM interface via radio bus according to the Zig-Bee® standard. All Logica FM interfaces with integrated repeater.

Automatic addressing of the luminaires, supply modules and supply devices.

### PROGRAMMING

- System parameters per system
- Test parameters (date, time, duration, cycle) per system
- Operating duration per luminaire, supply module and supply device (programming overwrites setting on luminaire, supply module and supply device)
- Switching per system, luminaire or group (only at maintained mode)
- Free assignment of luminaires to groups per system

### INTERFACES

RS485 bus for communication to

- PC with optional software Logica Visual
- Building management system over Modbus RTU

RS232 bus for communication to

- Printer

Radio bus / Logica FM interface for communication to

- Luminaires, supply modules and supply devices

Ethernet for communication to

- PC with optional software Logica Visual
- Building management system over Modbus TCP

USB for

- Download of system configuration
- Download of test results
- Software updates

### OPERATION

Operation on the automatic test device or from a PC with the software Logica Visual (option). 4 buttons for input and colored 2.2" display with graphic and alphanumeric interface for output of all data and parameters, multilingual.

### TECHNICAL DATA

<b>Housing:</b>	Polycarbonate, grey (RAL 7035)
<b>Dimensions (H x W x D):</b>	90 x 160 x 75 mm
<b>Division units:</b>	9 DU
<b>Type of protection:</b>	IP20
<b>Protection class:</b>	II
<b>Mounting:</b>	Distributor installation (DIN rail)
<b>Mains supply:</b>	230 V / 50 Hz
<b>Ambient temperature:</b>	0 °C to +40 °C



### FUNCTIONS

#### TESTING

- Automatic execution of function and duration tests per system, simultaneous or delayed for the monitoring groups
- Manual execution of function and duration tests per system, luminaire, supply module and supply device or group

#### CONTROL

- Manual switching (on / off) in mains operation (only at maintained mode) per system, luminaire or group
- Manual dimming in mains operation (only at maintained mode) per system, luminaire or group

#### SIGNALLING / STORAGE

- Faults (lamp, communication fault, battery fault) per luminaire, supply module and supply device
- Tests of the last 2 years per luminaire, supply module and supply device

#### CONTROL INPUTS AND CONTROL OUTPUTS

- 4 control inputs, free programmable over SD Manager, for switching of luminaires or groups, Control signal: contact, potential-free
- 3 control outputs, only in combination with 1 to 3 fault signalling modules, free programmable over Logica FM and SD Manager, for signalling of collective faults, Control output per fault signalling module: 1 changeover, potential-free



## LOGICA FM FOR DISTRIBUTOR INSTALLATION

<b>Housing:</b>	Polycarbonate, grey (RAL 7035)
<b>Dimensions (H x W x D):</b>	90 x 160 x 75 mm
<b>Division units:</b>	9 DU
<b>Type of protection:</b>	IP20
<b>Protection class:</b>	II
<b>Mounting:</b>	Distributor installation (DIN rail)
<b>Mains supply:</b>	230 V / 50 Hz
<b>Ambient temperature:</b>	0 °C to +40 °C

Order code	Description
16303	Logica FM for distributor installation



## LOGICA FM FOR SURFACE WALL MOUNTING with fault signalling module

<b>Housing:</b>	Polystyrene, grey (RAL 7035)
<b>Dimensions (H x W x D):</b>	458 x 295 x 129 mm
<b>Type of protection:</b>	IP65
<b>Protection class:</b>	II
<b>Mounting:</b>	Surface wall mounting
<b>Mains supply:</b>	230 V / 50 Hz
<b>Ambient temperature:</b>	0 °C to +40 °C

Order code	Description
16303-B	Logica FM for surface wall mounting, with fault signalling module

## FM REPEATER for amplification of the radio signal

<b>Housing:</b>	Polycarbonate, grey (RAL 7035)
<b>Dimensions (H x W x D):</b>	80 x 160 x 60 mm
<b>Type of protection:</b>	IP66
<b>Protection class:</b>	II
<b>Mounting:</b>	Surface wall mounting or surface ceiling mounting
<b>Mains supply:</b>	198 V–254 V / 50 Hz
<b>Ambient temperature:</b>	0 °C to +40 °C

Order code	Description
16321	FM repeater, with battery





## FAULT SIGNALLING MODULE

Module for connection to Logica FM or Logica Z. External passing of a collective fault.

<b>Signalling output:</b>	Changeover, potential-free (250 V / 5 A)
<b>Housing:</b>	Polycarbonate, grey (RAL 7035)
<b>Dimensions (H x W x D):</b>	95 x 48 x 42 mm
<b>Type of protection:</b>	IP20
<b>Protection class:</b>	II
<b>Mounting:</b>	DIN rail
<b>Ambient temperature:</b>	0 °C to +40 °C

Order code	Description
G31305	Fault signalling module



## RS485/ETHERNET INTERFACE

Module for communication between Logica FM, Logica S or Logica Z and a PC with the software Logica Visual over network with choice of 10 Mbit/s (10BaseT) or 100 Mbit/s (100BaseT). Is required, if a second network connection is desired per test device or several central test devices are connected over RS485 and should be monitored and controlled on a common network connection.

<b>Scope of delivery:</b>	1 x mains adaptor, 1 x mounting adaptor for DIN rail, 1 x adaptor plug (DE-9 <-> plug terminals)
<b>Housing:</b>	Plastic
<b>Dimensions (H x W x D):</b>	90 x 48 x 25 mm
<b>Type of protection:</b>	IP20
<b>Protection class:</b>	II
<b>Mounting:</b>	DIN rail or surface wall mounting

Order code	Description
17223	RS485/Ethernet interface



## RS485/USB INTERFACE

Module for communication between Logica FM, Logica S or Logica Z and a PC with the software Logica Visual over USB.

<b>Scope of delivery:</b>	1x mounting adaptor for DIN rail, 1x USB cable
<b>Housing:</b>	Metal
<b>Dimensions (H x W x D):</b>	151 x 75 x 26 mm
<b>Type of protection:</b>	IP20
<b>Protection class:</b>	III
<b>Mounting:</b>	DIN rail or surface wall mounting

Order code	Description
16319	RS485/USB interface

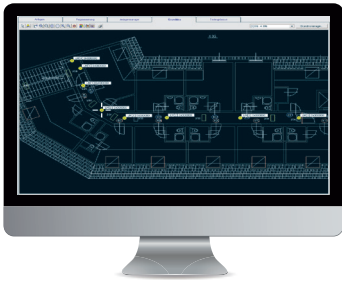


## PRINTER

Printer for connection to Logica FM or Logica Z. Printout of fault messages and test results.

<b>Paper type:</b>	Thermal paper
<b>Housing:</b>	Plastic, black
<b>Dimensions (H x W x D):</b>	85 x 85 x 57 mm
<b>Type of protection:</b>	IP20
<b>Protection class:</b>	I
<b>Mounting:</b>	DIN rail

Order code	Description
16302	Printer



## LOGICA VISUAL Monitoring and control software

Software for central monitoring and control of complex safety lightings with self-contained supply, decentral or central supply.

Version for Windows XP (32 / 64 Bit), Windows VISTA (32 / 64 Bit), Windows 7 (32 / 64 Bit) and Windows 8 (32 / 64 Bit), Windows 10 (32 / 64 Bit)

Order code	Description
12139	Logica Visual

### PROGRAMMING

- import of layout plans as DXF/DWG file
- textual and graphical assignment of all systems, circuits and luminaires resp. luminaires, supply devices and supply modules
- system parameters per system
- operating mode per circuit or luminaire (decentral and central supply)
- switching per circuit or luminaire (decentral and central supply)
- switching per luminaire (self-contained supply, only at maintained mode)
- test parameters per system
  - date
  - time
  - duration
  - cycle
- free assignment of luminaires to groups per system (decentral supply, central supply and self-contained supply)
- 3 programmable time functions (time switches) each for all 7 weekdays with 5 switch-on times per week day (decentral and central supply)

### FUNCTIONS

#### MONITORING

- automatic or manual execution of a function test
- automatic or manual execution of a duration test

#### CONTROL

- manual switching (on / off) of the maintained mode in mains operation per system (decentral and central supply)

#### SIGNALLING

- current status in online mode in graphical and numerical format per luminaire
  - operational condition
  - operating mode
  - faults
  - tests
- Faults in online mode per luminaire
  - lamp
  - communication fault
  - battery fault (self-contained supply)
- tests of the last 2 years per system