

# Formula 65 LED Extreme

## LED Emergency

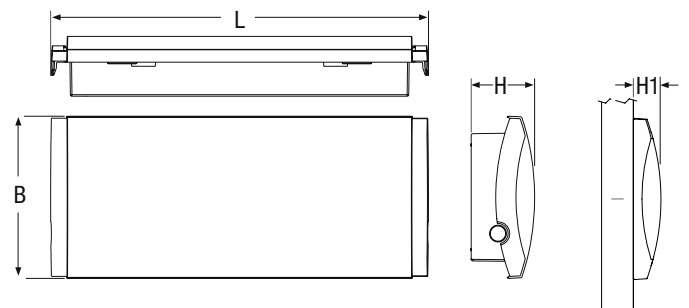
Designed to withstand extreme temperatures as low as -40 °C such as those in cold storage units at high altitudes. The emergency Ice Pack power supply that confers these features is separately supplied and includes an automatic battery heating system that does not degrade with extremely low temperatures. The device is designed to accommodate the feed-through cabling (section 2.5 mm) and is suitable for use with the M20 commercial cable brackets, both for smooth and corrugated tubes of 16 and 20 mm diameter.



### GENERAL CHARACTERISTICS

<b>Power*</b>	24W
<b>Power supply</b>	230Vac ± 10% 50Hz
<b>Operation</b>	Maintained (SA), Not Maintained (SE) Rest Mode:with optional control device (cod. 12101)
<b>Standard</b>	EN 60598-1, EN 60598-2-2, EN 60598-2-22, EN 1838, EN 50172, EN 62034
<b>Protection grade</b>	IP65, IK07
<b>Autonomy</b>	1h, 2h, 3h
<b>Working temp. SE</b>	0 ÷ +50 °C
<b>Working temp. SA</b>	0 ÷ +40 °C
<b>Working temp. con ICE PACK</b>	-40 ÷ +50 °C (+40°C Model SA)
<b>Mounting</b>	recessed, wall, ceiling, suspended ceiling, wall bracket
<b>Housing</b>	White Polycarbonate RAL 9003
<b>Optics</b>	Symmetrical, white
<b>Diffuser</b>	Transparent Polycarbonate
<b>Light source</b>	LED

\* Indicative power for comparison with fluorescent tube fixtures



Power* W	• Size (mm) •			Visibility pictogram	Distance (VD) suspended
	L	B	H	H1	
24	354	152	63.4	26	25 m / 28 m

\* Equivalent power for comparison with fluorescent lighting fixture

## Accessories

supplied

Order code	Description
-	N°2 CABLE GLAND M20
<b>19044</b>	ADHESIVE RIGHT LEFT LOW F65 (only for SA models)

## AutoRipara Accessories

to be ordered separately

Order code	Description	Battery
<b>RA03</b>	AUTORIPARA BATTERY SYSTEM (NiMH 3.6V 1.7Ah)	

## Autoripara Battery



- 1 SAFETY:** the AUTORIPARA system intervenes if the main battery fails.
- LUMINOUS FLUX:** operators can choose to set both batteries to operate simultaneously, doubling the luminous flux
- 2**
- AUTONOMY:** operators can choose to set both batteries to operate simultaneously, doubling the autonomy of the device
- 3**

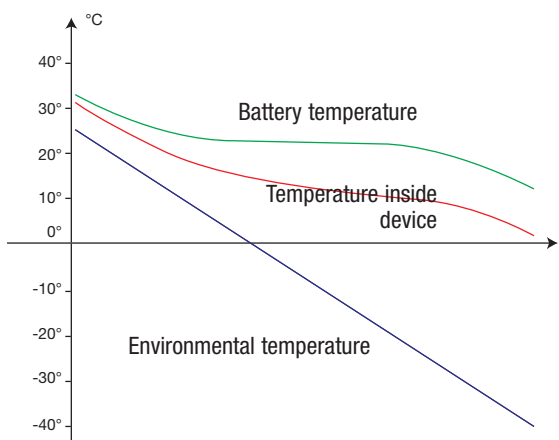
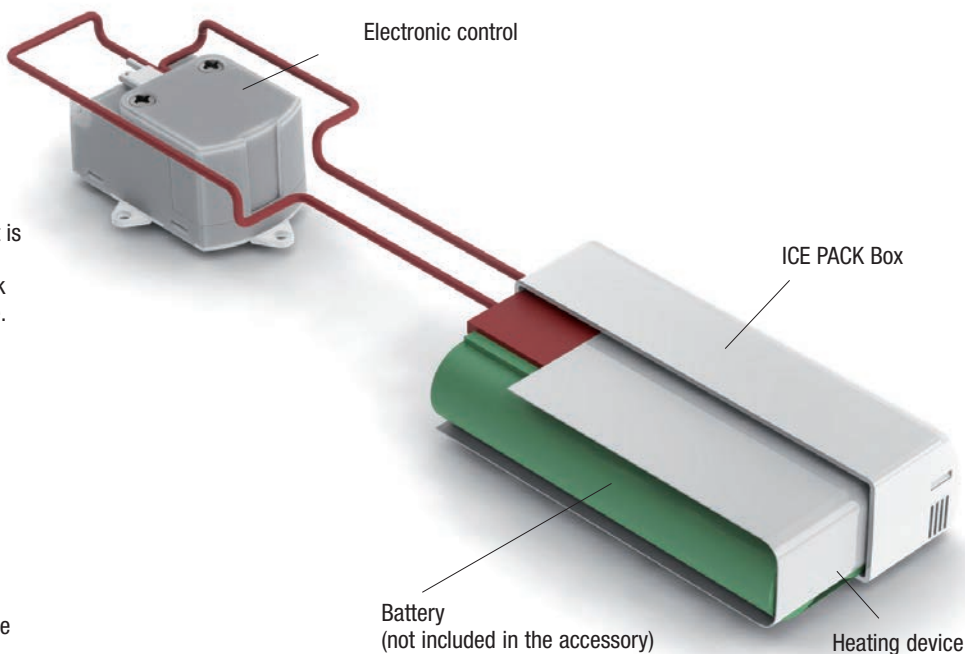
## Accessories

to be ordered separately

Order code	Description
<b>19046</b>	ICE PACK BATTERY
<b>19048</b>	RECESSED BOX + FRAMES F65 Extreme
<b>19049</b>	CEILING BRACKETS F65 EXTREME
<b>19045</b>	WALL BRACKET SUSPENDED F65
<b>19042</b>	DOUBLE SIDED SCREEN WITH LEFT/RIGHT ARROWS F65
<b>19043</b>	DOUBLE SIDED SCREEN WITH DOWN ARROWS F65
<b>19044</b>	ADHESIVE LEFT RIGHT DOWN F65
<b>12101</b>	REMOTE CONTROL (RM INHIBIT FUNCTION)

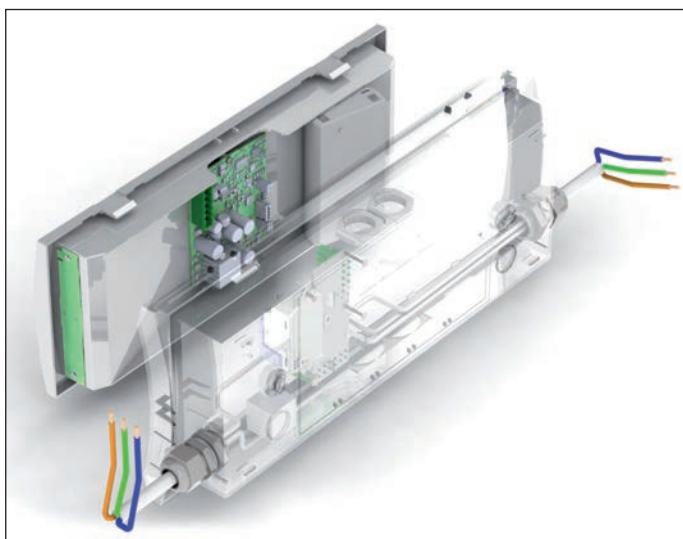


Accessory to maintain warm battery temperature even in working contexts with very low temperatures (-40°C). Ice Pack is controlled through an electronic circuit that is able to maintain a constant battery temperature. The absorption of the Ice Pack depends on the environmental temperature.



Battery temperature alignment based on environmental temperature with Ice Pack Accessory

THROUGH-WIRING CABLE



The device is designed to accommodate the feed-through cabling (section 2.5 mm) and is suitable for use with the M20 commercial cable glands, both for smooth and corrugated tubes of 16 and 20 mm diameter.

LG-AR

W*	Order code	Description	Model	Autonomy	Battery	N° LED	Flux** SE lm	Flux AR** SE lm	Flux SA lm	Power consump. max W	Weight kg	Pack single
24	19269	F65LED EX 24 IP65 LGAR SE123H S	SE	1-2-3h	NiMH 3.6V 1.7Ah	22	400/200/140	800/400/270		1.5	0.6	1/12
24	19270	F65LED EX 24 IP65 LGAR SA123H S	SA	1-2-3h	NiMH 3.6V 1.7Ah	22	400/200/140	800/400/270	280	4.5	0.6	1/12

Logica Ripara

LGFM-AR

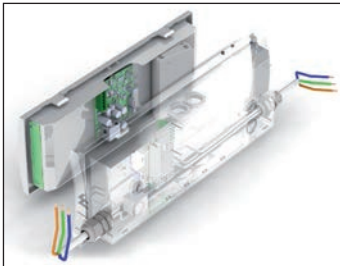
W*	Order code	Description	Model	Autonomy	Battery	N° LED	Flux** SE lm	Flux AR** SE lm	Flux SA lm	Power consump. max W	Weight kg	Pack single
24	19275	F65LED EX 24 LGFMAR SE 123H S	SE	1-2-3h	NiMH 3.6V 1.7Ah	22	400/200/140	800/400/270		1.5	0.6	1/12
24	19276	F65LED EX 24 LGFMAR SA 123H S	SA	1-2-3h	NiMH 3.6V 1.7Ah	22	400/200/140	800/400/270	280	5	0.6	1/12

Logica FM Ripara

\* Indicative power for comparison with fluorescent tube fixtures \*\* Minimum flux guaranteed according to EN 60598-2-22

# Accessories

## THROUGH-WIRING CABLE



- THROUGH-WIRING CABLE supplied

## AUTORIPARA BATTERY

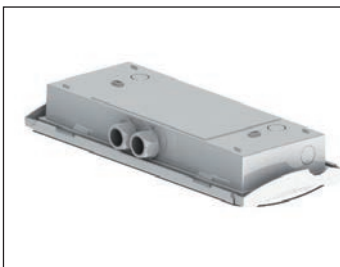


AUTORIPARA SYSTEM:

Inserting the Autoripara Battery, the device doubles the power or autonomy, and intervenes in the case of malfunctioning of the main battery

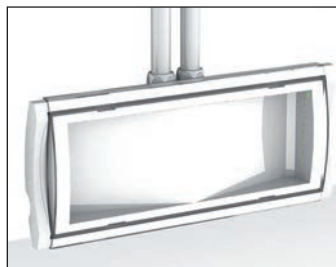
**RA03** AUTORIPARA BATTERY SYSTEM NIMH HT 3.6V 1.7Ah *to be ordered separately*

## CABLE GLAND M20

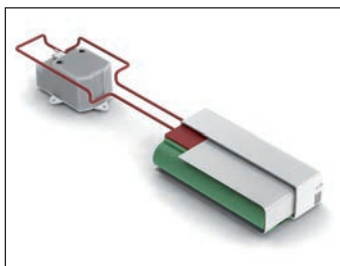


- 2 M20 CABLE GLAND (smooth and corrugated tubes  $\varnothing 16$  e  $\varnothing 20$ ) supplied

## HOUSING FOR M20 CABLE GLAND



## ICE PACK BATTERY



**19046** ICE PACK BATTERY *to be ordered separately*

# Installation accessories

## WALL MOUNTING WITH SPIRIT LEVEL



- SPIRIT LEVEL

## CEILING MOUNTING



## RECESSED MOUNTING



**19048** RECESSED BOX + FRAMES F65 EXTREME *to be ordered separately*

## RECESSED INSTALLATION ON SUSPENDED CEILING



**19049** CEILING BRACKET F65 EXTREME *to be ordered separately*

## RECESSED INTO SUSPENDED CEILING



**19049** SUSPENDED CEILING BRACKET F65 *to be ordered separately*

**19042** DOUBLE SIDED SCREEN WITH LEFT/RIGHT ARROWS *to be ordered separately*

**19043** DOUBLE SIDED SCREEN WITH DOWN ARROWS *to be ordered separately*

## WALL MOUNTING



**19045** WALL BRACKET *to be ordered separately*

**19042** DOUBLE SIDED SCREEN WITH LEFT/RIGHT ARROWS *to be ordered separately*

**19043** DOUBLE SIDED SCREEN WITH DOWN ARROWS *to be ordered separately*

## EXIT SIGNS (Visibility distance VD in table)



**19044** ADHESIVE RIGHT, LEFT, DOWN *supplied*