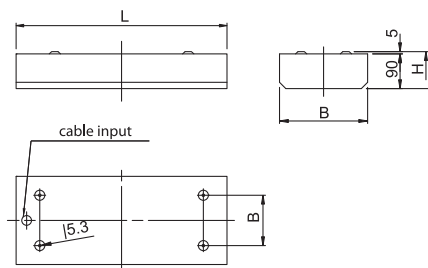


## Ceiling luminaires IP65

36-06 | arietis



### Material:

- body: a steel sheet finished by powder technology varnishing
- color: white RAL 9003
- cover: prismatic

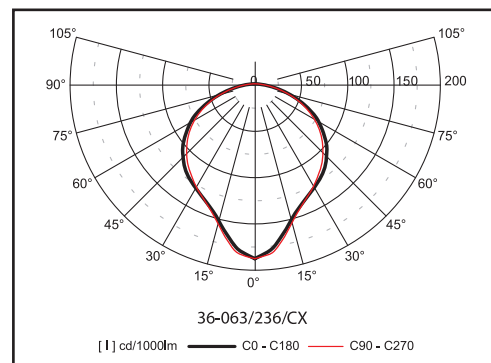
**Degree of protection:** IP 65

**Rated voltage:** 230V/50Hz

**Control gear:** low loss ballast or electronic ballast, dimmable ballast by request; the luminaires are offered also in emergency version

**Mounting:** built-up on a ceiling

**Application:** hospitals, laboratories, premises with high humidity and dustiness, premises demanding high hygienic standards



Code	Power	Lamp	Cap	LxBxH (mm)	Kg
36-063/236/ <u>E</u> X	2x36W	T8 lamp	G13	1292x381x95	9,1
36-063/258/ <u>E</u> X	2x58W	T8 lamp	G13	1592x381x95	10,8
36-063/228/CX	2x28W	T5 lamp	G5	1292x381x95	9,1
36-063/235/CX	2x35W	T5 lamp	G5	1592x381x95	10,8
36-063/414/CX	4x14W	T5 lamp	G5	682x677x95	8,0
36-064/236/ <u>E</u> X	2x36W	compact fl. lamp	2G11	482x414x95	5,0
36-064/255/CX	2x55W	compact fl. lamp	2G11	604x414x95	5,4
36-064/336/ <u>E</u> X	3x36W	compact fl. lamp	2G11	482x565x95	5,4
36-064/355/CX	3x55W	compact fl. lamp	2G11	604x565x95	5,8

E - E (low loss ballast) - C (electronic ballast)