

Granluce LED 8-18-24 W

LED Emergency

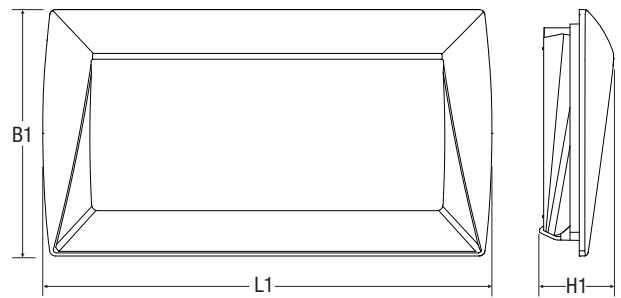
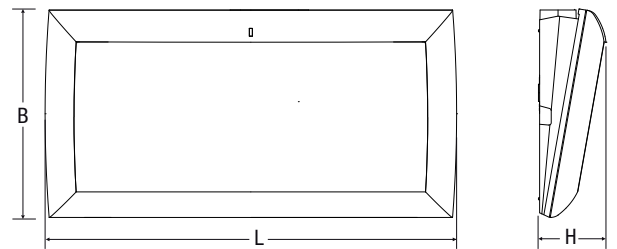
Fixture with high technical lighting output. LED light source with controlled beam lens. Dust-resistant monolithic optics. Polycarbonate housing, high-transparency diffuser. Large-radius parabola in metallized polycarbonate with a geometry of complex facets and sequential reflecting planes. Waterproofing gasket in anti-ageing expanded EPDM, resistant to atmospheric agents. High-efficiency electronic circuit in versions SE, SA, with autonomy of 1 or 3 hours.



GENERAL CHARACTERISTICS

- Power**** 8, 18, 24 W
- Power supply** 230Vac ± 10% 50Hz
- Operation** Permanent (SA), Non Permanent (SE), HT
- Standard** EN 60598-1, EN 60598-2-2, EN 60598-2-22, UNI EN 1838, UNI 11222
- Protection grade** IP65
- Autonomy** 1h, 3h
- Working temp.** 0°C ÷ +40°C
- Mounting** wall, ceiling, recessed
- Housing** Polycarbonate, white RAL 9010
- Optics** Asymmetrical with complex facets, metallized
- Louvre** Transparent polycarbonate
- Light source** LED

** Indicative power for comparison with fluorescent tube fixtures



recessed model

Power** W	• Dimensions (mm) •						Visibility distance (DV) pictogram
	L	B	H	L1	B1	H1	
8	355	180	58	388	213	30	26 m
18	355	180	58	388	213	30	26 m
24	355	180	58	388	213	30	26 m

Accessories

supplied

Order code	Description
3727	CABLE GLAND PG16/PG20 4003/RG
12941	SIGN LABELS 8,18,24 W (only version SA)

CEILING MOUNTING



Accessories

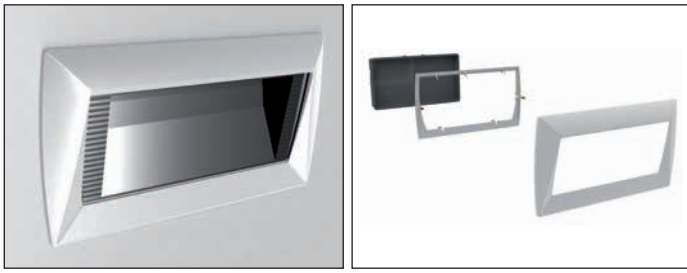
to be ordered separately

Order code	Description
12943	RECESSED KIT 8,18,24 W
12941	SIGN LABELS 8,18,24 W

WALL MOUNTING



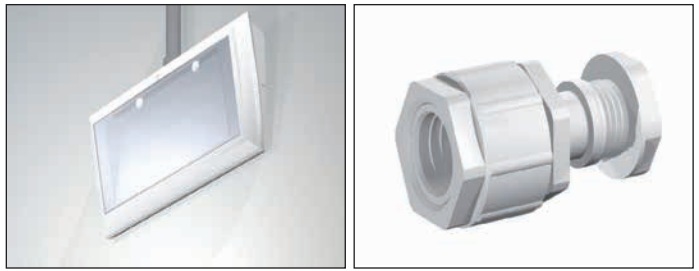
RECESSED MOUNTING



12942 RECESS KIT 6, 11W

to be ordered separately

WALL MOUNTING IP65



3727 CABLE GLAND PG16/PG20

supplied

ANTI-PANIC MOUNTING ON WALL

LIGHT BEAM 2 LED

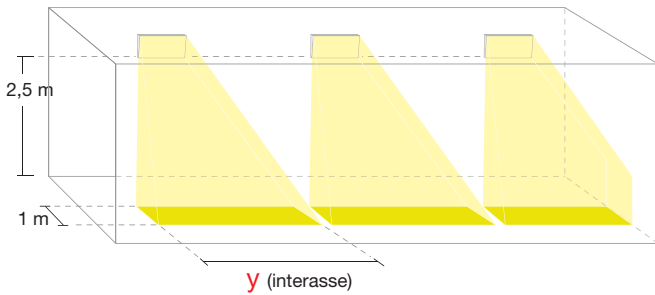
Surface 20 sq.m
Illumination 0.5 lux (on floor)

ANTI-PANIC MOUNTING ON CEILING

LIGHT BEAM 2 LED

Surface 12 sq.m
Illumination 0.5 lux (on floor)

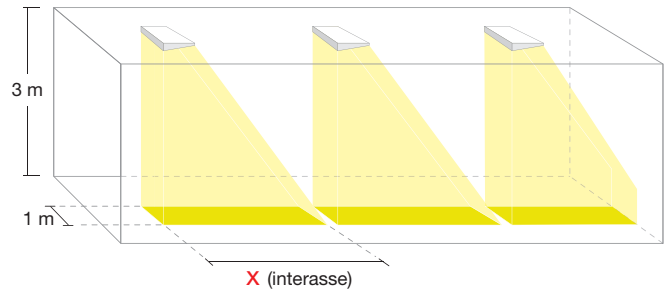
MOUNTING FOR ESCAPE ROUTES ON WALL



LIGHT BEAM 8-18-24 W

	8 W	18 W	24W
y	5.5 m	6.5 m	7.5 m

MOUNTING FOR ESCAPE ROUTES ON CEILING



LIGHT BEAM 8-18-24 W

	8 W	18 W	24W
x	4.5 m	5.5 m	7 m

AT

Autotest

	W**	Order code	Description	Version	Autonomy	Battery	n° LEDs	Flux* SE lm	Flux* SA lm	Absorption W	Weight kg	Pack
	8	12952	GRANLUCE LED IP65 AT 8W SE1NRM	SE	1h	NiCd 6V 0.75Ah	2	60	-	0,2	0,8	6
H	8	12953	GRANLUCE LED IP65 AT 8W SE3NRM	SE	3h	NiCd 7.2V 1.7Ah	2	60	-	0,2	0,9	6
	8	12954	GRANLUCE LED IP65 AT 8W SA1NRM	SA	1h	NiCd 6V 0.75Ah	2	60	45	0,3	0,8	6
H	8	12955	GRANLUCE LED IP65 AT 8W SA3NRM	SA	3h	NiCd 7.2V 1.7Ah	2	60	45	0,3	0,9	6
	18	12960	GRANLUCE LED IP65 AT 18WSE1NRM	SE	1h	NiCd 6V 0.75Ah	2	116	-	0,2	0,8	6
H	18	12961	GRANLUCE LED IP65 AT 18WSE3NRM	SE	3h	NiCd 7.2V 1.7Ah	2	116	-	0,2	0,9	6
	18	12962	GRANLUCE LED IP65 AT 18WSA1NRM	SA	1h	NiCd 6V 0.75Ah	2	116	75	0,3	0,8	6
H	18	12963	GRANLUCE LED IP65 AT 18WSA3NRM	SA	3h	NiCd 7.2V 1.7Ah	2	116	75	0,3	0,9	6
	24	12964	GRANLUCE LED IP65 AT 24WSE1NRM	SE	1h	NiCd 4.8V 1.7Ah	2	142	-	0,2	0,8	6
H	24	12965	GRANLUCE LED IP65 AT 24WSE3NRM	SE	3h	NiCd 7.2V 1.7Ah	2	142	-	0,2	0,9	6
	24	12966	GRANLUCE LED IP65 AT 24WSA1NRM	SA	1h	NiCd 4.8V 1.7Ah	2	142	75	0,3	0,8	6
	24	12967	GRANLUCE LED IP65 AT 24WSA3NRM	SA	3h	NiCd 7.2V 1.7Ah	2	142	75	0,3	0,9	6

* Minimum flux guaranteed according to EN 60598-2-22

SLG

	W	Order code	Description	Model	Autonomy	Battery	N° LED	Flux* SE lm	Flux* SA lm	Absorption W	Weight kg	Pack
	3,6	17332	GRANLUCE 2LED SLG IP65	SE/SA	1/3h	-	2	-	-	-	0,8	6

HT

Mains voltage power supply (ca 230V 50 Hz - cc 216V)

	W	Order code	Description	Model	Autonomy	Battery	N° LED	Flux* SE lm	Flux* SA lm	Absorption W	Weight kg	Pack
	3,6	17422	GRANLUCE 2LED HT IP65	SE/SA	1-3h	-	2	-	-	-	0,8	6

* Minimum flux guaranteed according to EN 60598-2-22