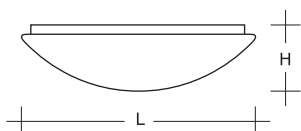
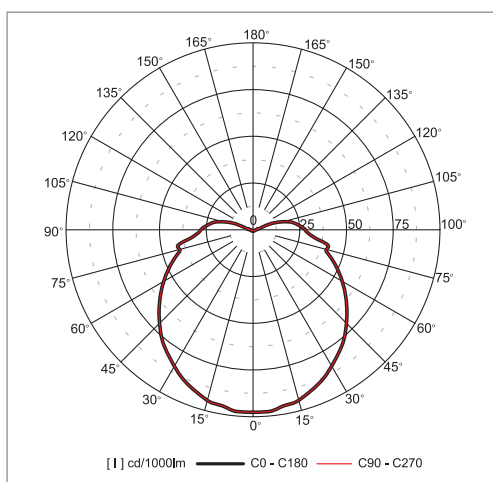
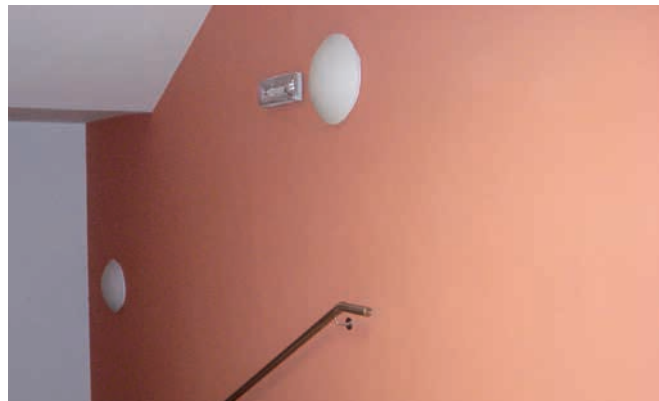


Castelo LED

Ceiling and wall-mounted LED luminaires



Material:

- body: a steel sheet finished by powder technology varnishing
- color: white RAL 9003
- diffuser: opal glass cover

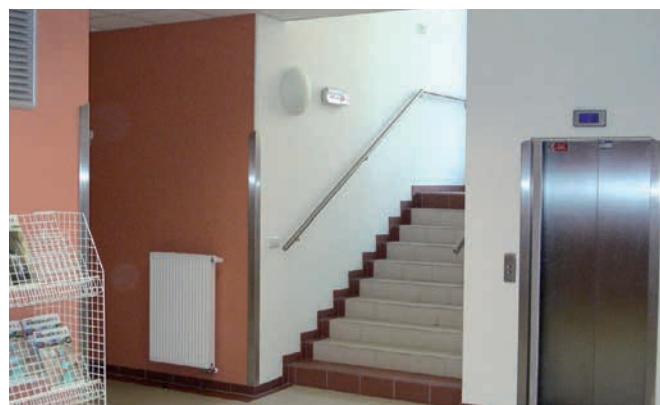
Degree of protection: IP44

Rated voltage: 230 V/50 Hz

Control gear: LED driver, the luminaires are offered also in emergency version

Mounting: surfaced mounting on ceiling or wall

Application: reception desks, entry halls, corridors and stairways, lobby-rooms



Power* W	Code	IP	Absorption W	Lum. flux (lm)	lm/W	Color temp. K	Ra	ØL x H (mm)	Kg
2x18	A24-10075B	44	18	1 550	86	3 000	>80	360 x 125	3.0
2x18	A24-10075C	44	18	1 590	88	4 000	>80	360 x 125	3.0
2x26	A24-10076B	44	25	2 170	87	3 000	>80	420 x 125	4.0
2x26	A24-10076C	44	25	2 230	89	4 000	>80	420 x 125	4.0

* Indicative power just for fluorescent fixtures comparison purpose

The following coding applies only for version A24-10075 and A24-10076, example: A24-10075BLG or A24-10076CAT

Order code with suffix AT: Luminaire for emergency lighting system AUTOTEST with its own battery

Order code with suffix LG: Luminaire for emergency lighting system LOGICA with its own battery

Order code with suffix S: Luminaire with HF ballast with monitoring module, manual coding

Order code with suffix A: Luminaire with HF ballast with monitoring module, automatic coding

Order code with suffix N: Luminaire with HF ballast suitable for LOGICA-NEA emergency lighting systems for CBS