



GENERAL CHARACTERISTICS

Equivalent Power	2x14
Power supply	SD version: Universal Multi Voltage 93÷265 Vac - 50/60Hz 176÷250 Vdc
Standard	EN 60598-1, EN 60598-2-1, EN 60598-2-22 (fundamental requirements), UNI9554:1989, DIN 18032-3:1997-04, EN 62471 (Photobiological hazard), ATEX 2014/34/UE
Protection grade	IP66, IK09
Working temp.	-20 ÷ +40°C
Mounting	ceiling, suspension, busbar trunking
Housing	Polyester powder coated sheet steel RAL 7035 grey
Head Caps	Technopolymer PC+PBT
Louvre	Wide anti-glare aluminium
Driver	SD version: SELV electronic SD (Cos $\varphi \geq 0,96$) with intelligent dimming
MTBF Control gear**	80.000h
Luminous flux maintenance**	>60.000h (versioni 2x) (L80B20)
Colour deviation	3 SDCM

** At environmental reference temperature of 25°C

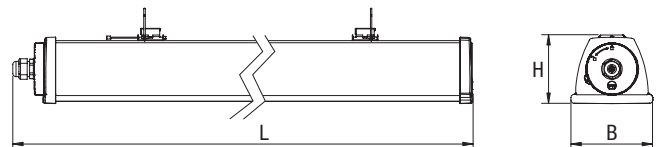
Acciaio Eco LED

Industrial LED luminaire

Acciaio Eco LED is the reply to the request for products with a high technological content for particularly demanding applications in high-risk areas. The steel housing and glass diffuser present both excellent mechanical resistance (IK09) and resistance to aggressive chemical agents. In the industrial field, it is ideally used in installations in environments with an explosive atmosphere, caused either by alterations of a gaseous type or by the presence of combustible powders suspended in the air (according to Standard ATEX 2014/34/ EU for zones 02 and 22).

The optic system is composed of a diffuser subdivided into cells for optimal light distribution, and a special microprismatic glass with very high light transmittance for greater visual comfort.

Acciaio Eco LED is suitable for heavy-duty use even in outdoor environments directly exposed to inclement weather: it is designed to resist mechanical vibrations and electromagnetic disturbances typical of industrial environments.



Power* W	• Dimensions (mm) •			Weight max kg
	L	B	H	
2x14	477	108	98,5	3.2

Accessories

supplied

Order code Description

15040 OPTICOM PHOTOSENSOR ACCIAIO

Accessories

to be ordered separately

Order code Description

15018 KIT ATEX ACCIAIO ECO

20122 ORIENTABLE BRACKET

Building automation

to be ordered separately

Order code Description

20102 BUILDING AUTOMATION CENTRAL UNIT

20124 BUILDING AUTOMATION CENTRAL UNIT WIFI

20104 2 INPUT INTERFACE – RADIO TRANSMITTER

15022 BUILDING AUTOMATION RADIO MODULE

15024 DALI MODULE

15034 1-10V MODULE

DOMOTIC
RADIO
MODULE

1÷10V
MODULE

DALI
MODULE

OPTIONAL MODULES TO EXTEND BEGHELLI SD TO RADIO CONTROL OR DALI / 1-10V SYSTEMS AND EMERGENCY



INTELLIGENT PHOTOSENSOR

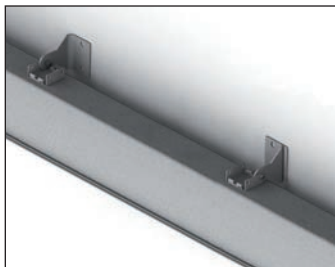
1. Autodimmer
Natural Light

2. Autodimmer
Dynamic Light

3. **opticom**
TECHNOLOGY

Smartphone Interface
to control and set up system

WALL BRACKET



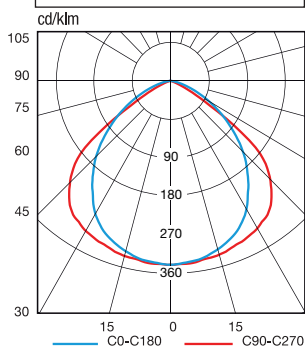
20122 to be ordered separately

Efficiency and dimming

The increase in luminous efficacy (lm/W) and the useful life of the device may vary significantly according to the degree of dimming. Assuming an average level of 50% of the luminous flux, the following results are obtained with the Acciaio Eco LED:

Dimming SD	50%
Device duration	+40%
Luminous efficiency	+10%

Polar Diagram SD



Acciaio Eco LED

SmartDriver **SD**

Power W	Order code	Description	LED Power W	Colour Temp. K	Colour rendering	Power consumption Max W	N° LEDs	Flux of LEDs lm (Tj=25°C)	Flux of fixture lm	Luminous efficiency lm/W	Energy Class	Packaging
2x14	A214ESD	ACCIAIO E LED 2x14 SD 4000K	11	4000	>80	12	32	1650	1400	117	A++	1