

Atomic LED - wall

Surfaced LED luminaires on wall – separate mounting



Material:

- body: anodized aluminum profile and steel endings
- color: gray
- diffuser: frosted acrylic

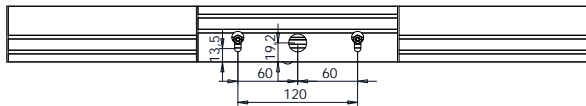
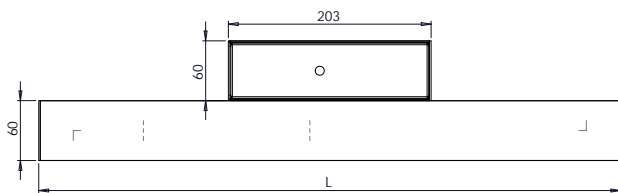
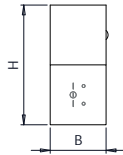
Degree of protection: IP40

Rated voltage: 230 V/50 Hz

Control gear: LED driver

Mounting: surfaced on wall

Application: restaurants, shops, hotels, finance houses, corridors and stairways



Power* W	Code	Optics	Absorption W	Lum. flux (lm)	lm/W	Color temp. K	Ra	EEC	L × B × H (mm)	Kg
2×36	A11-10052CM	frosted diffuser	40	3 483	87	4 000	>80	A+	1 207 × 56 × 120	3.5

* Indicative power just for fluorescent fixtures comparison purpose